

# REMS pressing tongs REMS pressing rings

Accessories for REMS radial presses (except for REMS Mini-Press) and suitable radial presses of other makes

for all common pressfitting systems

## Select REMS pressing tongs/ REMS pressing rings yourself!

Find the desired press fitting system in the table below and choose the size of pressing tongs/pressing rings that you require. Please note that pressfitting systems for gas installation may only be pressed with the pressing tongs/pressing rings which are highlighted in yellow in the table. Intermediate tongs (page 176) are necessary for driving the REMS pressing rings (PR).

Highly durable pressing tongs/pressing rings made of tenacious, specially hardened special steel. Pressing contours of REMS pressing tongs/pressing rings are system-specific and correspond with the respective pressfitting system. Thus perfect system-conformity, safe press jointing. Pressing jaws of pressing tongs/pressing rings manufactured on CNC production centres ensure high-precision machining of pressing contour. Low production tolerances as a result.

Drive through all REMS radial presses (except for REMS Mini-Press ACC, REMS Mini-Press 22V ACC and REMS Mini-Press S 22V ACC) and suitable radial presses of other makes. All pressing tongs marked with \* have an optional connection (Patent DE 101 01 440, Patent EP 1 223 008, Patent US 6,739,172) for manual drive through the radial press REMS Eco-Press. Read and follow the installation and assembly instructions of the system provider/manufacturer.

### REMS pressing tongs

REMS pressing tongs with 2 swivellable monoblock pressing jaws. Most sold standard version. REMS ACz, Fz, RFz, RFlz, VMPz pressing tongs with teeth prevent formation of burr on the pressing sleeve (Patent EP 2 027 971).

### REMS pressing tongs (4G)

REMS pressing tongs (4G) with two pivoted, parallel aligned pressing segments for linear pressing of midsize dimensions.

### REMS pressing tongs (S)

REMS pressing tongs (S) with one fixed and two pivoted pressing segments, for midsize dimensions. REMS VMPz pressing tongs with teeth prevent formation of burr on the pressing sleeve.

### REMS pressing rings (PR-3S)

REMS pressing ring (PR-3S) with 3 pressing segments, 2 swivel guided, for large dimension complex pressings. Ideal pressing through radially controlled movement of pressing segments, with adapter tongs.

### REMS pressing rings (PR-3B)

REMS pressing rings (PR-3B) with 3 pressing segments for high quality, large dimension pressings Optimum pressing by radially controlled movement of the pressing segments with adaptor tongs. REMS VAUFz, VFz, VMPz, VUSFz pressing rings with teeth prevent formation of burr on the pressing sleeve.

### REMS pressing rings 45° (PR-2B)

REMS pressing ring 45° (PR-2B), with 2 pressing jaws, for secure engagement of the pressing jaws in places of difficult access by 45° inclination (Patent EP 2 774 725). Drive with adapter tongs.

### Traceability according to EN 1775:2007

REMS pressing tongs/pressing rings with pressing contour F, M, V, SA, B, RN and UP have worked a specific marking into the pressing contour which leaves a lasting impression on the pressed fitting after the pressing process. This enables the user to check again whether the most suitable pressing tongs or the suitable pressing ring have been used to make the pressfit connection even after the pressing process.

With this traceability REMS fulfils the recommendations of the European standard EN 1775:2007 for the installation of pressfitting systems for gas.

### Hold-Harmless and Indemnification Agreement

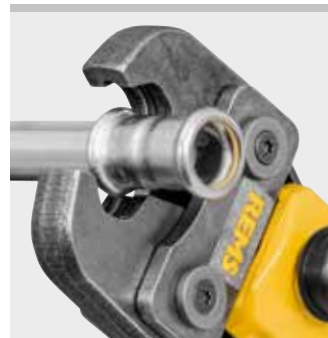
See page 178.

### Confirmation of suitability

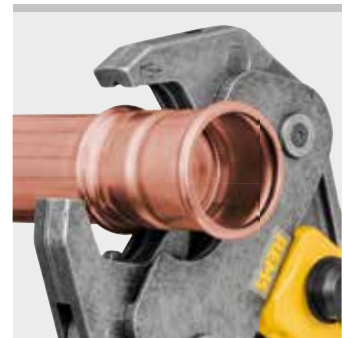
See page 177.



German Quality Product



with 2 swivellable monoblock pressing jaws. Most sold



REMS pressing tongs (4G)



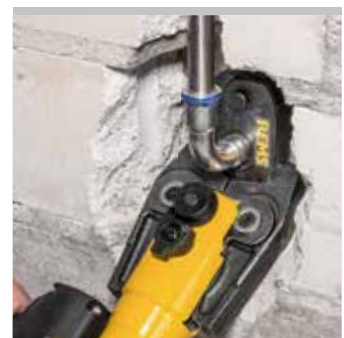
REMS pressing tongs (S)



REMS pressing rings (PR-3S)



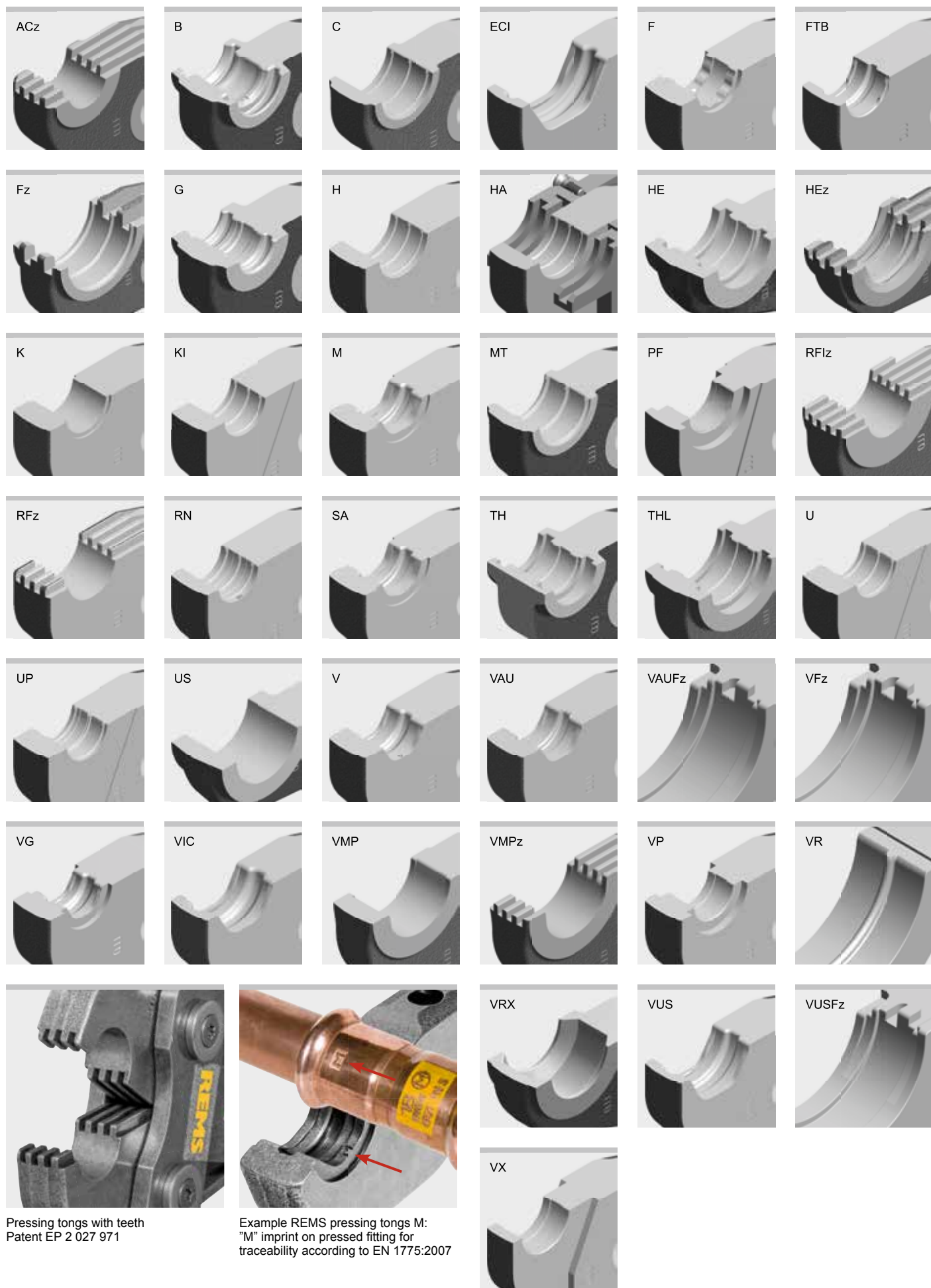
REMS pressing rings (PR-3B)



REMS pressing rings 45° (PR-2B)  
Patent EP 2 774 725

# REMS pressing tongs REMS pressing rings

Accessories for REMS radial presses (except for REMS Mini-Press) and suitable radial presses of other makes



System	Pressing contour	Art.-No.
<b>A</b>		
AC-FIX PRESS (Global Piping Systems)	H 12* H 16* H 20* H 25* H 32 RFz 12* RFz 16* RFz 20* RFz 25 RFz 32 U 16* U 20* U 25* U 32 VX 16* VX 20*	570300 570320 570350 570360 570380 571320 571325 571330 571335 571340 570765 570775 570780 570785 571635 571640
AC-FIX PRESS DUO (Global Piping Systems)	RFz 16* RFz 20* RFz 25 RFz 32 TH 16* TH 20* TH 25* TH 26* TH 32 U 16* U 20* U 25* U 32	571325 571330 571335 571340 570460 570470 570495 570475 570480 570765 570775 570780 570785
AC-FIX PRESS-MULTI (Global Piping Systems)	H 16* H 18* H 20* H 25* H 32 RFz 16* RFz 20* RFz 25 RFz 32 U 16* U 18* U 20* U 25* U 32	570320 570340 570350 570360 570380 571325 571330 571335 571340 570765 570770 570775 570780 570785
ACOME ACOPEX ALU	H 16* H 20* H 26* H 32 TH 16* TH 20* TH 26* TH 32 U 16* U 20* U 32	570320 570350 570370 570380 570460 570470 570475 570480 570765 570775 570785
ACOME MT	ACz 12* ACz 16* ACz 20* ACz 25	572642 572644 572646 572648
AHLSSELL A-press elförzinkad	M 12 M 15 M 18 M 22 M 28 M 35 M 42 (PR-3S) <sup>3)</sup> M 54 (PR-3S) <sup>3)</sup> M 76,1 XL (PR-3S) <sup>3) 7)</sup> M 88,9 XL (PR-3S) <sup>3) 7)</sup> M 108,0 XL (PR-3S) <sup>3) 7)</sup> M 12 45° (PR-2B) <sup>3)</sup> M 15 45° (PR-2B) <sup>3)</sup> M 18 45° (PR-2B) <sup>3)</sup> M 22 45° (PR-2B) <sup>3)</sup> M 28 45° (PR-2B) <sup>3)</sup> M 35 45° (PR-2B) <sup>3)</sup>	570100 570110 570120 570130 570140 570150 572706 R 572708 R 579101 R 579102 R 579103 R 574520 R 574522 R 574524 R 574526 R 574528 R 574530 R
AHLSSELL A-press koppar	V 12 V 15 V 18 V 22 V 28 V 35 V 42 V 54 V 12 45° (PR-2B) <sup>3)</sup> V 15 45° (PR-2B) <sup>3)</sup> V 18 45° (PR-2B) <sup>3)</sup> V 22 45° (PR-2B) <sup>3)</sup> V 28 45° (PR-2B) <sup>3)</sup> V 35 45° (PR-2B) <sup>3)</sup>	570107 570115 570125 570135 570145 570155 570165 570175 574502 R 574504 R 574506 R 574508 R 574510 R 574512 R

System	Pressing contour	Art.-No.
AHLSSELL A-press rostfritt	M 15 M 18 M 22 M 28 M 35 M 42 (PR-3S) <sup>3)</sup> M 54 (PR-3S) <sup>3)</sup> M 76,1 XL (PR-3S) <sup>3) 7)</sup> M 88,9 XL (PR-3S) <sup>3) 7)</sup> M 108,0 XL (PR-3S) <sup>3) 7)</sup> M 15 45° (PR-2B) <sup>3)</sup> M 18 45° (PR-2B) <sup>3)</sup> M 22 45° (PR-2B) <sup>3)</sup> M 28 45° (PR-2B) <sup>3)</sup> M 35 45° (PR-2B) <sup>3)</sup>	570110 570120 570130 570140 570150 572706 R 572708 R 579101 R 579102 R 579103 R 574522 R 574524 R 574526 R 574528 R 574530 R
AIRBEL PRESSCLIM	M 15 M 18 M 22 M 28 M 35 M 42 (PR-3S) <sup>3)</sup> M 54 (PR-3S) <sup>3)</sup> M 76,1 XL (PR-3S) <sup>3) 7)</sup> M 88,9 XL (PR-3S) <sup>3) 7)</sup> M 108,0 XL (PR-3S) <sup>3) 7)</sup> M 15 45° (PR-2B) <sup>3)</sup> M 18 45° (PR-2B) <sup>3)</sup> M 22 45° (PR-2B) <sup>3)</sup> M 28 45° (PR-2B) <sup>3)</sup> M 35 45° (PR-2B) <sup>3)</sup>	570110 570120 570130 570140 570150 572706 R 572708 R 579101 R 579102 R 579103 R 574522 R 574524 R 574526 R 574528 R 574530 R
AIRBEL SERTINOX	M 15 M 18 M 22 M 28 M 35 M 42 (PR-3S) <sup>3)</sup> M 54 (PR-3S) <sup>3)</sup> M 76,1 XL (PR-3S) <sup>3) 7)</sup> M 88,9 XL (PR-3S) <sup>3) 7)</sup> M 108,0 XL (PR-3S) <sup>3) 7)</sup> M 15 45° (PR-2B) <sup>3)</sup> M 18 45° (PR-2B) <sup>3)</sup> M 22 45° (PR-2B) <sup>3)</sup> M 28 45° (PR-2B) <sup>3)</sup> M 35 45° (PR-2B) <sup>3)</sup>	570110 570120 570130 570140 570150 572706 R 572708 R 579101 R 579102 R 579103 R 574522 R 574524 R 574526 R 574528 R 574530 R
ALB Sistema Multicapa	TH 16* TH 18* TH 20* TH 26* TH 32 TH 40 TH 50 (S) TH 63 (S) H 16* H 18* H 20* H 26* H 32 H 40 (4G) U 16* U 18* U 20* C 26* U 32 U 40	570460 570465 570470 570475 570480 570485 572400 572405 570320 570340 570350 570370 570380 570390 570765 570770 570775 570750 570785 570790
ALB Sistema Multicapa Gas	TH 16* TH 20* TH 26* TH 32 H 16* H 20* H 26* H 32 U 16* U 20* C 26* U 32	570460 570470 570475 570480 570320 570350 570370 570380 570765 570775 570750 570785
APE Serie AP	B 16* B 20* B 26 B 32 H 16* H 20* H 26* H 32 U 16* U 20* C 26* U 32	570850 570860 570870 570880 570320 570350 570370 570380 570765 570775 570750 570785
APE Serie AP Gas	B 16* B 20* B 26 B 32 H 16* H 20* H 26* H 32 TH 16* TH 18* TH 20* TH 26* TH 32 U 16* U 20* U 40 U 50 U 63 (PR-3B) <sup>3)</sup> U 63 (S)	570850 570860 570870 570880 570320 570350 570370 570380 570460 570465 570470 570475 570480 570765 570775 570790 570795 572837 R 572365
APE Serie AP Gas	TH 16* TH 20* TH 26* TH 32	570460 570470 570475 570480

System	Pressing contour	Art.-No.
AQUATECHNIK Universal	B 16* B 20* B 26 B 32 F 16* F 20* F 26* F 32 F 16 45° (PR-2B) <sup>3)</sup> F 20 45° (PR-2B) <sup>3)</sup> F 26 45° (PR-2B) <sup>3)</sup> F 32 45° (PR-2B) <sup>3)</sup> H 16* H 20* H 26* H 32 TH 16* TH 20* TH 26* TH 32 U 16* U 20* C 26* U 32	570850 570860 570870 570880 570717 570727 570730 570735 574550 R 574552 R 574554 R 574556 R 570320 570350 570370 570380 570460 570470 570475 570480 570765 570775 570750 570785
ARKA DUROsystem	H 16* H 20* H 25* H 26* H 32 TH 16* TH 20* TH 25* TH 26* TH 32 U 16* U 20* U 25* U 32	570320 570350 570360 570370 570380 570460 570470 570495 570475 570480 570765 570775 570780 570785
ASCHL NIR	M 15 M 18 M 22 M 28 M 35 M 42 (PR-3S) <sup>3)</sup> M 54 (PR-3S) <sup>3)</sup> M 76,1 XL (PR-3S) <sup>3) 7)</sup> M 88,9 XL (PR-3S) <sup>3) 7)</sup> M 108,0 XL (PR-3S) <sup>3) 7)</sup> M 15 45° (PR-2B) <sup>3)</sup> M 18 45° (PR-2B) <sup>3)</sup> M 22 45° (PR-2B) <sup>3)</sup> M 28 45° (PR-2B) <sup>3)</sup> M 35 45° (PR-2B) <sup>3)</sup>	570110 570120 570130 570140 570150 572706 R 572708 R 579101 R 579102 R 579103 R 574522 R 574524 R 574526 R 574528 R 574530 R
ASSOTHERM IPC-RAC Carbon Steel	M 15 M 18 M 22 M 28 M 35 M 42 (4G) M 54 (4G) M 42 (PR-3S) <sup>3)</sup> M 54 (PR-3S) <sup>3)</sup> M 15 45° (PR-2B) <sup>3)</sup> M 18 45° (PR-2B) <sup>3)</sup> M 22 45° (PR-2B) <sup>3)</sup> M 28 45° (PR-2B) <sup>3)</sup> M 35 45° (PR-2B) <sup>3)</sup>	570110 570120 570130 570140 570150 570160 570170 572706 R 572708 R 574522 R 574524 R 574526 R 574528 R 574530 R
ASSOTHERM IPI-RAX Inox	M 15 M 18 M 22 M 28 M 35 M 42 (4G) M 54 (4G) M 42 (PR-3S) <sup>3)</sup> M 54 (PR-3S) <sup>3)</sup> M 15 45° (PR-2B) <sup>3)</sup> M 18 45° (PR-2B) <sup>3)</sup> M 22 45° (PR-2B) <sup>3)</sup> M 28 45° (PR-2B) <sup>3)</sup> M 35 45° (PR-2B) <sup>3)</sup>	570110 570120 570130 570140 570150 570160 570170 572706 R 572708 R 574522 R 574524 R 574526 R 574528 R 574530 R
ASSOTHERM IPM-Multistrato	H 16* H 20* H 26* H 32 TH 16* TH 20* TH 26* TH 32 THL 32 TH 40 TH 50 (S) TH 63 (S) U 16* U 20* C 26* U 32	570320 570350 570370 570380 570460 570470 570475 570480 570487 570485 572400 572405 570765 570775 570750 570785

# REMS pressing tongs REMS pressing rings

Accessories for REMS radial presses (except for REMS Mini-Press)  
and suitable radial presses of other makes

System	Pressing contour	Art.-No.
ASSOTHERM	M 15	570110
IPR-RRA	M 18	570120
Copper	M 22	570130
	M 28	570140
	M 35	570150
	M 42 (4G)	570160
	M 54 (4G)	570170
	M 42 (PR-3S) <sup>3)</sup>	572706 R
	M 54 (PR-3S) <sup>3)</sup>	572708 R
	M 15 45° (PR-2B) <sup>3)</sup>	574522 R
	M 18 45° (PR-2B) <sup>3)</sup>	574524 R
	M 22 45° (PR-2B) <sup>3)</sup>	574526 R
	M 28 45° (PR-2B) <sup>3)</sup>	574528 R
	M 35 45° (PR-2B) <sup>3)</sup>	574530 R
ASSOTHERM	M 15	570110
IPR-RRA	M 18	570120
Copper Gas	M 22	570130
	M 28	570140
	M 35	570150
	M 15 45° (PR-2B) <sup>3)</sup>	574522 R
	M 18 45° (PR-2B) <sup>3)</sup>	574524 R
	M 22 45° (PR-2B) <sup>3)</sup>	574526 R
	M 28 45° (PR-2B) <sup>3)</sup>	574528 R
	M 35 45° (PR-2B) <sup>3)</sup>	574530 R
ASTM F 1807 (Fittings with Copper Crimp Ring for PEX tubing)	US ¾"	571450
	US ½"	571455
	US ¾"	571460
	US 1"	571465
	US 1 ¼"	571470
	US 1 ½"	571475
	US 2"	571477
<b>B</b>		
Bampi BALPEX (serie MP)	TH 16*	570460
	TH 18*	570465
	TH 20*	570470
	TH 26*	570475
	TH 32	570480
	TH 40	570485
	TH 50 (S)	572400
	TH 63 (S)	572405
Bampi BALPEX Gas	TH 16*	570460
	TH 20*	570470
	TH 26*	570475
BARBI EASYPRESS (Industrial Blansol)	H 12*	570300
	H 16*	570320
	H 20*	570350
	H 25*	570360
	H 32	570380
	RFz 12*	571320
	RFz 16*	571325
	RFz 20*	571330
	RFz 25	571335
	RFz 32	571340
	U 16*	570765
	U 20*	570775
	U 25*	570780
	U 32	570785
BARBI MULTIPEX (Industrial Blansol)	H 14*	570310
	H 16*	570320
	H 18*	570340
	H 20*	570350
	H 25*	570360
	H 26*	570370
	H 32	570380
	RFz 16*	571325
	RFz 18*	571327
	RFz 20*	571330
	RFz 25	571335
	RFz 32	571340
	TH 16*	570460
	TH 20*	570470
	TH 26*	570475
	TH 32	570480
	U 16*	570765
	U 18*	570770
	U 20*	570775
	U 25*	570780
	U 32	570785
	U 40	570790
	U 50	570795
	U 63 (PR-3B) <sup>3)</sup>	572837 R
	U 63 (S)	572365

System	Pressing contour	Art.-No.
BEGETUBE/ IVAR	B 14*	570845
	B 16*	570850
	B 18*	570855
	B 20*	570860
	B 26	570870
	B 32	570880
	Fz 40	570742
	Fz 50	570747
	F 63 (S)	572385
	Fz 75 (PR-3B) <sup>3)</sup>	572830 R
BRASELI GPF GAS	TH 16*	570460
	TH 20*	570470
	TH 25*	570495
	TH 32	570480
BRASELI Pressfitting PE-X	RFz 16*	571325
	RFz 20*	571330
	RFz 25	571335
	RFz 32	571340
BRASELI Pressfitting Multicapa	U 16*	570765
	U 18*	570770
	U 20*	570775
	U 25*	570780
	U 32	570785
	U 40	570790
	U 50	570795
Brass Form Master Press	H 16*	570320
	H 18*	570340
	H 20*	570350
	TH 16*	570460
	TH 18*	570465
	TH 20*	570470
	U 16*	570765
	U 18*	570770
	U 20*	570775
Brass & Fittings PRESSMAN MultiPress	RFz 16*	571325
	RFz 18*	571327
	AcZ 20*	572646
	RFz 25	571335
	RFz 32	571340
Brass & Fittings PRESSMAN RetiPress	RFz 16*	571325
	RFz 18*	571327
	AcZ 20*	572646
	RFz 25	571335
	RFz 32	571340
BRASSTECH MULTIthermoSAN Brasspress	B 16*	570850
	B 20*	570860
	B 26	570870
	B 32	570880
	F 16*	570717
	F 20*	570727
	F 26*	570730
	F 16 45° (PR-2B) <sup>3)</sup>	574550 R
	F 20 45° (PR-2B) <sup>3)</sup>	574552 R
	F 26 45° (PR-2B) <sup>3)</sup>	574554 R
	H 16*	570320
	H 18*	570340
	H 20*	570350
	H 26*	570370
	TH 16*	570460
	TH 18*	570465
	TH 20*	570470
	TH 26*	570475
	TH 32	570480
	TH 40	570485
	TH 50 (S)	572400
	TH 63 (S)	572405
	U 16*	570765
	U 18*	570770
	U 20*	570775
	U 25*	570780
	U 32	570785
Cello Products >B< Press	VUS ½" (OD 15,9 mm)	571770
	VUS ¾" (OD 22,2 mm)	571775
	VUS 1" (OD 28,6 mm)	571780
	VUS 1 ¼" (OD 34,9 mm)	571785
	VUS 1 ½" (OD 41,3 mm)	571790
	VUS 2" (OD 54,0 mm)	571795

System	Pressing contour	Art.-No.
CHIALI	TH 16*	570460
CHIALIPEX	TH 20*	570470
	TH 26*	570475
	TH 32	570480
	TH 40	570485
	TH 50 (S)	572400
	TH 63 (S)	572405
Climatek	TH 14*	570455
Clima Therm	TH 16*	570460
	TH 18*	570465
	TH 20*	570470
	TH 26*	570475
	TH 32	570480
	H 40 A (4G)	570695
Climatrix	H 16*	570320
Climatrix Rhinopex	H 20*	570350
	U 16*	570765
	U 20*	570775
	TH 14*	570455
	TH 16*	570460
	TH 18*	570465
	TH 20*	570470
	TH 26*	570475
	TH 32	570480
ClouSet	TH 16*	570460
	TH 18*	570465
	TH 20*	570470
Comap PEX Press	RFz 12*	571320
	RFz 16*	571325
	RFz 20*	571330
	RFz 25	571335
Comap Multiskin	TH 14*	570455
	TH 16*	570460
	TH 18*	570465
	TH 20*	570470
	TH 26*	570475
	THL 32	570487
	TH 40	570485
	TH 50 (S)	572400
	TH 63 (S)	572405
Comap Multiskin Gas	TH 16*	570460
	TH 20*	570470
	TH 26*	570475
	THL 32	570487
COMISA Press System	TH 14*	570455
	TH 16*	570460
	TH 18*	570465
	TH 20*	570470
	TH 25*	570495
	TH 26*	570475
	TH 32	570480
	TH 40	570485
	TH 50 (S)	572400
	TH 63 (S)	572405
	H 14*	570310
	H 16*	570320
	H 18*	570340
	H 20*	570350
	H 26*	570370
	H 32	570380
	B 14*	570845
	B 16*	570850
	B 18*	570855
	B 20*	570860
	B 26	570870
	B 32	570880
COMISA Press System Gas	TH 16*	570460
	TH 20*	570470
	TH 26*	570475
	TH 32	570480

Pressfitting systems for gas installations must only be pressed with pressing tongs/pressing rings which are highlighted in yellow.  
Observe the national regulations.

\* These pressing tongs also fit the manual radial press REMS Eco-Press. Observe the national regulations.

- Only pressing tongs from designation "108" (1<sup>st</sup> quarter of 2008), "208" (2<sup>nd</sup> quarter of 2008) etc. can be used. The designation is stamped on every pressing jaw.
- For this pressfitting system producing a pressing joint with manual radial presses is not permitted.
- Adapter tongs are required for driving pressing rings (PR), see page 176.
- Press fittings made of red bronze (ProPress XL) must be pressed with pressing rings with press contour VUSR, copper fittings (ProPress XL-C) and stainless steel fittings (ProPress XL-S) with pressing rings with press contour VUSF.
- For taking suitable pressing inserts.
- Press fittings made of red bronze (Sanpress XL) must be pressed with pressing rings with press contour VR, copper fittings (Profipress XL, Profipress G XL), carbon steel (Prestabo XL) and stainless steel fittings (Sanpress Inox XL, Sanpress Inox G XL) with pressing rings with press contour VF.
- Driven by REMS Power-Press XL.

The suitability of REMS pressing tools for pressfitting systems: Date 15.10.2018. For the updated situation regarding suitability status check our website:  
[www.rems.de](http://www.rems.de) → Downloads → Product catalogues, brochures → REMS Catalogue.

Pressing tongs/pressing rings for additional pressfitting systems on request.



# REMS pressing tongs REMS pressing rings

Accessories for REMS radial presses (except for REMS Mini-Press)  
and suitable radial presses of other makes

System	Pressing contour	Art.-No.
F.B.Q. BARONIO	V 15	570115
BQ press	V 18	570125
carbon steel	V 22	570135
	V 28	570145
	V 35	570155
	V 42	570165
	V 54	570175
	V 15 45° (PR-2B) <sup>3)</sup>	574504 R
	V 18 45° (PR-2B) <sup>3)</sup>	574506 R
	V 22 45° (PR-2B) <sup>3)</sup>	574508 R
	V 28 45° (PR-2B) <sup>3)</sup>	574510 R
	V 35 45° (PR-2B) <sup>3)</sup>	574512 R
F.B.Q. BARONIO	V 15	570115
BQ press gas	V 18	570125
	V 22	570135
	V 28	570145
	V 35	570155
	V 42	570165
	V 54	570175
	V 15 45° (PR-2B) <sup>3)</sup>	574504 R
	V 18 45° (PR-2B) <sup>3)</sup>	574506 R
	V 22 45° (PR-2B) <sup>3)</sup>	574508 R
	V 28 45° (PR-2B) <sup>3)</sup>	574510 R
	V 35 45° (PR-2B) <sup>3)</sup>	574512 R
Fercofloor	RFz 16*	571325
DUO Press	RFz 20*	571330
FERCO PEX	RFz 25	571335
	RFz 32	571340
	TH 16*	570460
	TH 20*	570470
	TH 25*	570495
	TH 32	570480
Fercofloor	RFz 16*	571325
DUO Press	RFz 20*	571330
MULTIFER	RFz 25	571335
	RFz 32	571340
	TH 16*	570460
	TH 20*	570470
	TH 25*	570495
	TH 32	570480
	U 16*	570765
	U 18*	570770
	U 20*	570775
	U 25*	570780
	U 32	570785
FILINOX	FTB 15	571432
Filpress	FTB 18	571434
	FTB 22	571436
	FTB 28	571438
	M 42 (PR-3S) <sup>3)</sup>	572706 R
	M 54 (PR-3S) <sup>3)</sup>	572708 R
FILINOX	M 15	570110
Instalpress	M 18	570120
Steel	M 22	570130
	M 28	570140
	M 35	570150
	M 42 (PR-3S) <sup>3)</sup>	572706 R
	M 54 (PR-3S) <sup>3)</sup>	572708 R
	M 15 45° (PR-2B) <sup>3)</sup>	574522 R
	M 18 45° (PR-2B) <sup>3)</sup>	574524 R
	M 22 45° (PR-2B) <sup>3)</sup>	574526 R
	M 28 45° (PR-2B) <sup>3)</sup>	574528 R
	M 35 45° (PR-2B) <sup>3)</sup>	574530 R
FILINOX	M 15	570110
Instalpress	M 18	570120
Inox	M 22	570130
	M 28	570140
	M 35	570150
	M 42 (4G)	570160
	M 54 (4G)	570170
	M 15 45° (PR-2B) <sup>3)</sup>	574522 R
	M 18 45° (PR-2B) <sup>3)</sup>	574524 R
	M 22 45° (PR-2B) <sup>3)</sup>	574526 R
	M 28 45° (PR-2B) <sup>3)</sup>	574528 R
	M 35 45° (PR-2B) <sup>3)</sup>	574530 R
Fittings Estándar	RFz 16*	571325
ECO-PRESS	RFz 20*	571330
	RFz 25	571335
	RFz 32	571340

System	Pressing contour	Art.-No.
Fittings Estándar	RFz 16*	571325
MULTICAPA	RFz 18*	571327
	RFz 20*	571330
	RFz 25	571335
	RFz 32	571340
Fittings Estándar	RFz 16*	571325
PE-X	RFz 20*	571330
	RFz 25	571335
	RFz 32	571340
FOHS	TH 16*	570460
HEIZTECHNIK	TH 20*	570470
FOHSPRESS	TH 26*	570475
	TH 32	570480
FORNARA	B 16*	570850
ForPress	B 20*	570860
	B 26	570870
	B 32	570880
	F 16*	570717
	F 20*	570727
	F 26*	570730
	F 32	570735
	F 16 45° (PR-2B) <sup>3)</sup>	574550 R
	F 20 45° (PR-2B) <sup>3)</sup>	574552 R
	F 26 45° (PR-2B) <sup>3)</sup>	574554 R
	F 32 45° (PR-2B) <sup>3)</sup>	574556 R
	H 16*	570320
	H 20*	570350
	H 26*	570370
	H 32	570380
	TH 16*	570460
	TH 20*	570470
	TH 26*	570475
	TH 32	570480
	U 16*	570765
	U 20*	570775
	U 32	570785
FRABO	V 12	570107
CHROMEPRESS	V 15	570115
	V 18	570125
	V 22	570135
	V 12 45° (PR-2B) <sup>3)</sup>	574502 R
	V 15 45° (PR-2B) <sup>3)</sup>	574504 R
	V 18 45° (PR-2B) <sup>3)</sup>	574506 R
	V 22 45° (PR-2B) <sup>3)</sup>	574508 R
FRABO	V 12	570107
FRABOPRESS	V 15	570115
C-STEEL	V 18	570125
Securfrabo	V 22	570135
	V 28	570145
	V 35	570155
	V 42	570165
	V 54	570175
	M 76,1 XL (PR-3S) <sup>3)7)</sup>	579101 R
	M 88,9 XL (PR-3S) <sup>3)7)</sup>	579102 R
	M 108,0 XL (PR-3S) <sup>3)7)</sup>	579103 R
	V 12 45° (PR-2B) <sup>3)</sup>	574502 R
	V 15 45° (PR-2B) <sup>3)</sup>	574504 R
	V 18 45° (PR-2B) <sup>3)</sup>	574506 R
	V 22 45° (PR-2B) <sup>3)</sup>	574508 R
	V 28 45° (PR-2B) <sup>3)</sup>	574510 R
	V 35 45° (PR-2B) <sup>3)</sup>	574512 R
FRABO	V 12	570107
FRABOPRESS	V 15	570115
316 SECURFRABO	V 18	570125
	V 22	570135
	V 28	570145
	V 35	570155
	V 42	570165
	V 54	570175
	M 76,1 XL (PR-3S) <sup>3)7)</sup>	579101 R
	M 88,9 XL (PR-3S) <sup>3)7)</sup>	579102 R
	M 108,0 XL (PR-3S) <sup>3)7)</sup>	579103 R
	V 12 45° (PR-2B) <sup>3)</sup>	574502 R
	V 15 45° (PR-2B) <sup>3)</sup>	574504 R
	V 18 45° (PR-2B) <sup>3)</sup>	574506 R
	V 22 45° (PR-2B) <sup>3)</sup>	574508 R
	V 28 45° (PR-2B) <sup>3)</sup>	574510 R
	V 35 45° (PR-2B) <sup>3)</sup>	574512 R

System	Pressing contour	Art.-No.
FRABO	V 15	570115
FRABOPRESS	V 18	570125
316 GAS	V 22	570135
	V 28	570145
	V 35	570155
	V 42	570165
	V 54	570175
	V 12 45° (PR-2B) <sup>3)</sup>	574502 R
	V 15 45° (PR-2B) <sup>3)</sup>	574504 R
	V 18 45° (PR-2B) <sup>3)</sup>	574506 R
	V 22 45° (PR-2B) <sup>3)</sup>	574508 R
	V 28 45° (PR-2B) <sup>3)</sup>	574510 R
	V 35 45° (PR-2B) <sup>3)</sup>	574512 R
FRABO	H 16*	570320
FRABOPRESS	H 20*	570350
MULTI-BRASS	TH 16*	570460
(MB)	TH 20*	570470
	TH 26*	570475
	TH 32	570480
	U 16*	570765
	U 20*	570775
FRABO	H 16*	570320
FRABOPRESS	H 20*	570350
MULTI-PLUS	H 26*	570370
(MP)	U 16*	570765
	U 20*	570775
	C 26*	570750
FRABO	V 22	570135
FRABOPRESS	V 28	570145
NEXT	V 22 45° (PR-2B) <sup>3)</sup>	574508 R
	V 28 45° (PR-2B) <sup>3)</sup>	574510 R
FRABO	V 12	570107
FRABOPRESS	V 15	570115
SECURFRABO	V 18	570125
FRABOPRESS H <sub>2</sub> O	V 22	570135
	V 28	570145
	V 35	570155
	V 42	570165
	V 54	570175
	M 76,1 XL (PR-3S) <sup>3)7)</sup>	579101 R
	M 88,9 XL (PR-3S) <sup>3)7)</sup>	579102 R
	M 108,0 XL (PR-3S) <sup>3)7)</sup>	579103 R
	V 12 45° (PR-2B) <sup>3)</sup>	574502 R
	V 15 45° (PR-2B) <sup>3)</sup>	574504 R
	V 18 45° (PR-2B) <sup>3)</sup>	574506 R
	V 22 45° (PR-2B) <sup>3)</sup>	574508 R
	V 28 45° (PR-2B) <sup>3)</sup>	574510 R
	V 35 45° (PR-2B) <sup>3)</sup>	574512 R
FRABO	V 12	570107
FRABOPRESS	V 15	570115
SECURFRABO	V 18	570125
FRABOPRESS Gas	V 22	570135
	V 28	570145
	V 35	570155
	V 42	570165
	V 54	570175
	V 12 45° (PR-2B) <sup>3)</sup>	574502 R
	V 15 45° (PR-2B) <sup>3)</sup>	574504 R
	V 18 45° (PR-2B) <sup>3)</sup>	574506 R
	V 22 45° (PR-2B) <sup>3)</sup>	574508 R
	V 28 45° (PR-2B) <sup>3)</sup>	574510 R
	V 35 45° (PR-2B) <sup>3)</sup>	574512 R
FRABO	V 15	570115
SOLARPRESS	V 18	570125
	V 22	570135
	V 28	570145
	V 35	570155
	V 15 45° (PR-2B) <sup>3)</sup>	574504 R
	V 18 45° (PR-2B) <sup>3)</sup>	574506 R
	V 22 45° (PR-2B) <sup>3)</sup>	574508 R
	V 28 45° (PR-2B) <sup>3)</sup>	574510 R
	V 35 45° (PR-2B) <sup>3)</sup>	574512 R
FRABO FRABO	M 22	570130
TS PRESS	M 22 45° (PR-2B) <sup>3)</sup>	574526 R
	V 22	570135
	V 22 45° (PR-2B) <sup>3)</sup>	574508 R

Pressfitting systems for gas installations must only be pressed with pressing tongs/pressing rings which are highlighted in yellow. Observe the national regulations.

\* These pressing tongs also fit the manual radial press REMS Eco-Press. Observe the national regulations.

- 1) Only pressing tongs from designation "108" (1<sup>st</sup> quarter of 2008), "208" (2<sup>nd</sup> quarter of 2008) etc. can be used. The designation is stamped on every pressing jaw.
- 2) For this pressfitting system producing a pressing joint with manual radial presses is not permitted.
- 3) Adapter tongs are required for driving pressing rings (PR), see page 176.
- 4) Press fittings made of red bronze (ProPress XL) must be pressed with pressing rings with press contour VUSR, copper fittings (ProPress XL-C) and stainless steel fittings (ProPress XL-S) with pressing rings with press contour VUSF.
- 5) For taking suitable pressing inserts.
- 6) Press fittings made of red bronze (Sanpress XL) must be pressed with pressing rings with press contour VR, copper fittings (Profipress XL, Profipress G XL), carbon steel (Prestabo XL) and stainless steel fittings (Sanpress Inox XL, Sanpress Inox G XL) with pressing rings with press contour VF.
- 7) Driven by REMS Power-Press XL.

The suitability of REMS pressing tools for pressfitting systems: Date 15.10.2018. For the updated situation regarding suitability status check our website: [www.rems.de](http://www.rems.de) → Downloads → Product catalogues, brochures → REMS Catalogue.

Pressing tongs/pressing rings for additional pressfitting systems on request.

System	Pressing contour	Art.-No.	
Fränkische alpex-duo	B 16*	570850	
	B 18*	570855	
	B 20*	570860	
	B 26	570870	
	B 32	570880	
	F 16*	570717	
	F 18*	570720	
	F 20*	570727	
	F 26*	570730	
	F 32	570735	
	F 16 45° (PR-2B) <sup>3)</sup>	574550 R	
	F 20 45° (PR-2B) <sup>3)</sup>	574552 R	
	F 26 45° (PR-2B) <sup>3)</sup>	574554 R	
	F 32 45° (PR-2B) <sup>3)</sup>	574556 R	
	TH 16*	570460	
	TH 18*	570465	
	TH 20*	570470	
	TH 26*	570475	
	TH 32	570480	
	Fränkische alpex F50 PROFI	F 16*	570717
		F 20*	570727
		F 26*	570730
		F 32	570735
		F 16 45° (PR-2B) <sup>3)</sup>	574550 R
F 20 45° (PR-2B) <sup>3)</sup>		574552 R	
F 26 45° (PR-2B) <sup>3)</sup>		574554 R	
F 32 45° (PR-2B) <sup>3)</sup>		574556 R	
H 16*		570320	
H 20*		570350	
H 26*		570370	
H 32		570380	
TH 16*		570460	
TH 20*		570470	
TH 26*		570475	
TH 32		570480	
U 16*		570765	
U 20*		570775	
U 25*		570780	
U 32		570785	
VP 16*		570910	
VP 20*		570915	
VP 32		570925	
Fränkische alpex-gas <sup>2)</sup>		F 20 <sup>2)</sup>	570727
	F 26 <sup>2)</sup>	570730	
	F 32 <sup>2)</sup>	570735	
	F 20 45° (PR-2B) <sup>3)</sup>	574552 R	
	F 26 45° (PR-2B) <sup>3)</sup>	574554 R	
	F 32 45° (PR-2B) <sup>3)</sup>	574556 R	
Fränkische alpex L	Fz 40	570742	
	Fz 50	570747	
	F 63 (S)	572385	
	Fz 75 (PR-3B) <sup>3)</sup>	572830 R	
<b>G</b>			
gaboherm H+S	TH 10*	570467	
	TH 12*	570452	
	TH 14*	570455	
	TH 15*	570457	
	TH 16*	570460	
	TH 17*	570462	
	TH 18*	570465	
	TH 20*	570470	
	TH 25*	570495	
	TH 26*	570475	
	TH 32	570480	
	TH 40	570485	
	TH 50 (S)	572400	
	TH 63 (S)	572405	
	Gallagher USA YogaPipe ACR	H 12* (1/4")	570300
		U 14* (3/4")	570760
		U 16* (1/2")	570765
		U 18* (3/4")	570770
U 20* (1/2")		570775	
U 25* (3/4")		570780	
U 32 (1 1/4")		570785	
Geberit Mapress C-STAHL	M 12	570100	
	M 15	570110	
	M 18	570120	
	M 22	570130	
	M 28	570140	
	M 35	570150	
	M 35 (PR-3S) <sup>3)</sup>	572727 R	
	M 42 (4G)	570160	
	M 54 (4G)	570170	
	M 42 (PR-3S) <sup>3)</sup>	572706 R	
	M 54 (PR-3S) <sup>3)</sup>	572708 R	
	M 76,1 XL (PR-3S) <sup>3) 7)</sup>	579101 R	
	M 88,9 XL (PR-3S) <sup>3) 7)</sup>	579102 R	
	M 108,0 XL (PR-3S) <sup>3) 7)</sup>	579103 R	
	M 12 45° (PR-2B) <sup>3)</sup>	574520 R	
	M 15 45° (PR-2B) <sup>3)</sup>	574522 R	
	M 18 45° (PR-2B) <sup>3)</sup>	574524 R	
	M 22 45° (PR-2B) <sup>3)</sup>	574526 R	
	M 28 45° (PR-2B) <sup>3)</sup>	574528 R	
	M 35 45° (PR-2B) <sup>3)</sup>	574530 R	

System	Pressing contour	Art.-No.	
Geberit Mapress EDELSTAHL	M 12	570100	
	M 15	570110	
	M 18	570120	
	M 22	570130	
	M 28	570140	
	M 35	570150	
	M 35 (PR-3S) <sup>3)</sup>	572727 R	
	M 42 (4G)	570160	
	M 54 (4G)	570170	
	M 42 (PR-3S) <sup>3)</sup>	572706 R	
	M 54 (PR-3S) <sup>3)</sup>	572708 R	
	M 76,1 XL (PR-3S) <sup>3) 7)</sup>	579101 R	
	M 88,9 XL (PR-3S) <sup>3) 7)</sup>	579102 R	
	M 108,0 XL (PR-3S) <sup>3) 7)</sup>	579103 R	
	M 12 45° (PR-2B) <sup>3)</sup>	574520 R	
	M 15 45° (PR-2B) <sup>3)</sup>	574522 R	
	M 18 45° (PR-2B) <sup>3)</sup>	574524 R	
	M 22 45° (PR-2B) <sup>3)</sup>	574526 R	
	M 28 45° (PR-2B) <sup>3)</sup>	574528 R	
	M 35 45° (PR-2B) <sup>3)</sup>	574530 R	
	Geberit Mapress EDELSTAHL Gas	M 15	570110
		M 18	570120
		M 22	570130
		M 28	570140
M 35		570150	
M 42 (PR-3S) <sup>3)</sup>		572706 R	
M 54 (PR-3S) <sup>3)</sup>		572708 R	
M 15 45° (PR-2B) <sup>3)</sup>		574522 R	
M 18 45° (PR-2B) <sup>3)</sup>		574524 R	
M 22 45° (PR-2B) <sup>3)</sup>		574526 R	
M 28 45° (PR-2B) <sup>3)</sup>		574528 R	
M 35 45° (P R-2B) <sup>3)</sup>		574530 R	
Geberit Mapress KUPFER		M 12	570100
		M 15	570110
	M 18	570120	
	M 22	570130	
	M 28	570140	
	M 35	570150	
	M 35 (PR-3S) <sup>3)</sup>	572727 R	
	M 42 (4G)	570160	
	M 54 (4G)	570170	
	M 42 (PR-3S) <sup>3)</sup>	572706 R	
	M 54 (PR-3S) <sup>3)</sup>	572708 R	
	M 76,1 XL (PR-3S) <sup>3) 7)</sup>	579101 R	
	M 88,9 XL (PR-3S) <sup>3) 7)</sup>	579102 R	
	M 108,0 XL (PR-3S) <sup>3) 7)</sup>	579103 R	
M 12 45° (PR-2B) <sup>3)</sup>	574520 R		
M 15 45° (PR-2B) <sup>3)</sup>	574522 R		
M 18 45° (PR-2B) <sup>3)</sup>	574524 R		
M 22 45° (PR-2B) <sup>3)</sup>	574526 R		
M 28 45° (PR-2B) <sup>3)</sup>	574528 R		
M 35 45° (PR-2B) <sup>3)</sup>	574530 R		
Geberit Mapress KUPFER Gas	M 15	570110	
	M 18	570120	
	M 22	570130	
	M 28	570140	
	M 35	570150	
	M 42 (PR-3S) <sup>3)</sup>	572706 R	
	M 54 (PR-3S) <sup>3)</sup>	572708 R	
	M 15 45° (PR-2B) <sup>3)</sup>	574522 R	
	M 18 45° (PR-2B) <sup>3)</sup>	574524 R	
	M 22 45° (PR-2B) <sup>3)</sup>	574526 R	
	M 28 45° (PR-2B) <sup>3)</sup>	574528 R	
	M 35 45° (PR-2B) <sup>3)</sup>	574530 R	
	Geberit Mepla	G 16*	570400
		G 20*	570410
G 26*		570420	
G 32		570430	
G 40		570440	
G 50		570450	
G 63 (S)		572470	
Geberit Mepla Therm	G 16*	570400	
	G 20*	570410	
	G 26*	570420	
Geberit Volex	TH 16*	570460	
	TH 20*	570470	
	TH 26*	570475	
General Fittings 5T00	H 16*	570320	
	H 20*	570350	
	H 26*	570370	
	H 32	570380	
	TH 16*	570460	
	TH 20*	570470	
	TH 26*	570475	
	TH 32	570480	
	U 16*	570765	
	U 20*	570775	
	U 32	570785	

System	Pressing contour	Art.-No.	
General Fittings Serie 5S00	B 16*	570850	
	B 18*	570855	
	B 20*	570860	
	B 26	570870	
	B 32	570880	
	F 16*	570717	
	F 20*	570727	
	F 26*	570730	
	F 16 45° (PR-2B) <sup>3)</sup>	574550 R	
	F 20 45° (PR-2B) <sup>3)</sup>	574552 R	
	F 26 45° (PR-2B) <sup>3)</sup>	574554 R	
	H 16*	570320	
	H 18*	570340	
	H 20*	570350	
	H 25*	570360	
	H 26*	570370	
	H 32	570380	
	H 40 (4G)	570390	
	TH 16*	570460	
	TH 18*	570465	
	TH 20*	570470	
	TH 25*	570495	
	TH 26*	570475	
	TH 32	570480	
TH 40	570485		
TH 50 (S)	572400		
TH 63 (S)	572405		
U 16*	570765		
U 18*	570770		
U 20*	570775		
U 25*	570780		
U 32	570785		
U 40	570790		
U 50	570795		
U 63 (S)	572365		
U 63 (PR-3B) <sup>3)</sup>	572837 R		
General Fittings Trident	B 16*	570850	
	B 20*	570860	
	B 26	570870	
	B 32	570880	
	F 16*	570717	
	F 20*	570727	
	F 26*	570730	
	F 16 45° (PR-2B) <sup>3)</sup>	574550 R	
	F 20 45° (PR-2B) <sup>3)</sup>	574552 R	
	F 26 45° (PR-2B) <sup>3)</sup>	574554 R	
	H 16*	570320	
	H 20*	570350	
	H 26*	570370	
	H 32	570380	
TH 16*	570460		
TH 20*	570470		
TH 26*	570475		
TH 32	570480		
U 16*	570765		
U 20*	570775		
U 32	570785		
General Fittings Trident Gas	TH 16*	570460	
	TH 20*	570470	
	TH 26*	570475	
	TH 32	570480	
	H 16*	570320	
	H 20*	570350	
	H 26*	570370	
	H 32	570380	
	U 16*	570765	
	U 20*	570775	
	U 32	570785	
	Giacomini Raccordi RM Giacomini	H 16*	570320
		H 20*	570350
		H 26*	570370
H 32		570380	
TH 16*		570460	
TH 20*		570470	
TH 26*		570475	
TH 32	570480		
U 16*	570765		
U 20*	570775		
U 32	570785		
Giacomini RM MULTIGAS	H 16*	570320	
	H 20*	570350	
	H 26*	570370	
	H 32	570380	
	TH 16*	570460	
	TH 20*	570470	
	TH 26*	570475	
	TH 32	570480	
	U 16*	570765	
	U 20*	570775	
	U 32	570785	

# REMS pressing tongs REMS pressing rings

Accessories for REMS radial presses (except for REMS Mini-Press)  
and suitable radial presses of other makes

System	Pressing contour	Art.-No.
Giacomini	V 15	570115
Valvole Giacomini serie R850V	V 18	570125
	V 22	570135
	V 28	570145
	V 35	570155
	V 42	570165
	V 54	570175
	V 15 45° (PR-2B) <sup>3)</sup>	574504 R
	V 18 45° (PR-2B) <sup>3)</sup>	574506 R
	V 22 45° (PR-2B) <sup>3)</sup>	574508 R
	V 28 45° (PR-2B) <sup>3)</sup>	574510 R
	V 35 45° (PR-2B) <sup>3)</sup>	574512 R
	SA 15	570935
	SA 18	570940
	SA 22	570945
	SA 28	570950
	SA 35	570955
	M 15	570110
	M 18	570120
	M 22	570130
	M 28	570140
	M 35	570150
	M 15 45° (PR-2B) <sup>3)</sup>	574522 R
	M 18 45° (PR-2B) <sup>3)</sup>	574524 R
	M 22 45° (PR-2B) <sup>3)</sup>	574526 R
	M 28 45° (PR-2B) <sup>3)</sup>	574528 R
	M 35 45° (PR-2B) <sup>3)</sup>	574530 R
Golan Pipe Systems (Scandinavia) Alu-Press	U 16*	570765
	U 20*	570775
	U 25*	570780
	U 32	570785
	U 40	570790
	U 50	570795
	U 63 (S)	572365
	U 63 (PR-3B) <sup>3)</sup>	572837 R
	U 75 (PR-3B) <sup>3)</sup>	572828 R
Grinnell G-PRESS Copper Fittings	VUS 1/2" (OD 15,9 mm)	571770
	VUS 3/4" (OD 22,2 mm)	571775
	VUS 1" (OD 28,6 mm)	571780
	VUS 1 1/4" (OD 34,9 mm)	571785
	VUS 1 1/2" (OD 41,3 mm)	571790
	VUS 2" (OD 54,0 mm)	571795
	VUSFz 2 1/2" (PR-3B) <sup>3)</sup> (OD 66,7 mm)	572819 R
	VUSFz 3" (PR-3B) <sup>3)</sup> (OD 79,4 mm)	572820 R
	VUSFz 4" (PR-3B) <sup>3)</sup> (OD 104,8 mm)	572821 R
GS Wärmesysteme System TH	TH 14*	570455
	TH 16*	570460
	TH 20*	570470
	TH 26*	570475
	TH 32	570480
	TH 40	570485
	TH 50 (S)	572400
	TH 63 (S)	572405
GS Wärmesysteme System V	V 15	570115
	V 18	570125
	V 22	570135
	V 28	570145
	V 35	570155
	V 15 45° (PR-2B) <sup>3)</sup>	574504 R
	V 18 45° (PR-2B) <sup>3)</sup>	574506 R
	V 22 45° (PR-2B) <sup>3)</sup>	574508 R
	V 28 45° (PR-2B) <sup>3)</sup>	574510 R
	V 35 45° (PR-2B) <sup>3)</sup>	574512 R

## H

HakaGerodur	TH 10*	570467
HakaGerodur-System	TH 11,6*	570482
	TH 12*	570452
	TH 14*	570455
	TH 16*	570460
	TH 17*	570462
	TH 18*	570465
	TH 20*	570470
	TH 25*	570495
	TH 26*	570475
	TH 32	570480
	TH 40	570485
	TH 50 (S)	572400
	TH 63 (S)	572405

System	Pressing contour	Art.-No.
HASTINIK	M 15	570110
Hastinik/Hitpress	M 18	570120
	M 22	570130
	M 28	570140
	M 35	570150
	M 42 (4G)	570160
	M 54 (4G)	570170
	M 42 (PR-3S) <sup>3)</sup>	572706 R
	M 54 (PR-3S) <sup>3)</sup>	572708 R
	M 76,1 XL (PR-3S) <sup>3)7)</sup>	579101 R
	M 88,9 XL (PR-3S) <sup>3)7)</sup>	579102 R
	M 108,0 XL (PR-3S) <sup>3)7)</sup>	579103 R
	M 15 45° (PR-2B) <sup>3)</sup>	574522 R
	M 18 45° (PR-2B) <sup>3)</sup>	574524 R
	M 22 45° (PR-2B) <sup>3)</sup>	574526 R
	M 28 45° (PR-2B) <sup>3)</sup>	574528 R
	M 35 45° (PR-2B) <sup>3)</sup>	574530 R
heima-press	TH 16*	570460
	TH 20*	570470
	TH 26*	570475
	TH 32	570480
	TH 40	570485
	TH 50 (S)	572400
	TH 63 (S)	572405
HELIROMA Klimapress	U 16*	570765
	U 18*	570770
	U 20*	570775
	U 25*	570780
	U 32	570785
	U 40	570790
	U 50	570795
	U 63 (PR-3B) <sup>3)</sup>	572837 R
	U 63 (S)	572365
	U 75 (PR-3B) <sup>3)</sup>	572828 R
HELIROMA romapress	RFz 16*	571325
	RFz 20*	571330
	RFz 25	571335
	RFz 32	571340
Henco	TH 14*	570455
	TH 16*	570460
	TH 18*	570465
	TH 20*	570470
	TH 26*	570475
	HE 32	571900
	HEz 40	571904
Herotec	H 16*	570320
TEMPUS-PRESS PLUS	H 20*	570350
	H 25*	570360
	H 32	570380
	RFz 16*	571325
	RFz 20*	571330
	RFz 25	571335
	RFz 32	571340
	TH 16*	570460
	TH 20*	570470
	TH 25*	570495
	TH 32	570480
	U 16*	570765
	U 20*	570775
	U 25*	570780
	U 32	570785
	U 40	570790
	U 50	570795
	U 63 (S)	572365
	U 63 (PR-3B) <sup>3)</sup>	572837 R
	U 75 (PR-3B) <sup>3)</sup>	572828 R
Herz PIPEFIX	TH 10*	570467
	TH 16*	570460
	TH 20*	570470
	TH 26*	570475
	TH 32	570480
	TH 40	570485
	TH 50 (S)	572400
	TH 63 (S)	572405
	THz 75 (PR-3B) <sup>3)</sup>	572829 R
HIDRONIX	TH 16*	570460
MULTIGAS	TH 20*	570470
	TH 26*	570475

System	Pressing contour	Art.-No.
HIDRONIX	TH 14*	570455
MULTIPIPE	TH 16*	570460
	TH 20*	570470
	TH 26*	570475
	TH 32	570480
	H 14*	570310
	H 16*	570320
	H 18*	570340
	H 20*	570350
	H 26*	570370
	H 32	570380
	U 14*	570760
	U 16*	570765
	U 18*	570770
	U 20*	570775
	C 26*	570750
	U 32	570785
HIDRONIX UNICO	TH 14*	570455
	TH 16*	570460
	TH 20*	570470
	TH 26*	570475
	TH 32	570480
	H 14*	570310
	H 16*	570320
	H 18*	570340
	H 20*	570350
	H 26*	570370
	H 32	570380
	U 14*	570760
	U 16*	570765
	U 18*	570770
	U 20*	570775
	C 26*	570750
	U 32	570785
HITEC Sistema Multistrato	TH 14*	570455
	TH 16*	570460
	TH 18*	570465
	TH 20*	570470
	TH 26*	570475
	TH 32	570480
	TH 40	570485
	TH 50 (S)	572400
hp praski BAVARIA-press	TH 10*	570467
	TH 14*	570455
	TH 16*	570460
	TH 17*	570462
	TH 20*	570470
	TH 25*	570495
	TH 26*	570475
	TH 32	570480
	TH 40	570485
	TH 50 (S)	572400
	TH 63 (S)	572405

## I

IBP >B< Flex	U 16*	570765
	U 18*	570770
	U 20*	570775
	U 25*	570780
	U 32	570785
IBP >B< Press	V 12	570107
	V 14	570112
	V 15	570115
	V 16	570117
	V 18	570125
	V 22	570135
	V 28	570145
	V 35	570155
	V 42	570165
	V 54	570175
	V 12 45° (PR-2B) <sup>3)</sup>	574502 R
	V 14 45° (PR-2B) <sup>3)</sup>	574532 R
	V 15 45° (PR-2B) <sup>3)</sup>	574504 R
	V 16 45° (PR-2B) <sup>3)</sup>	574534 R
	V 18 45° (PR-2B) <sup>3)</sup>	574506 R
	V 22 45° (PR-2B) <sup>3)</sup>	574508 R
	V 28 45° (PR-2B) <sup>3)</sup>	574510 R
	V 35 45° (PR-2B) <sup>3)</sup>	574512 R

Pressfitting systems for gas installations must only be pressed with pressing tongs/pressing rings which are highlighted in yellow. Observe the national regulations.

\* These pressing tongs also fit the manual radial press REMS Eco-Press. Observe the national regulations.

- Only pressing tongs from designation "108" (1<sup>st</sup> quarter of 2008), "208" (2<sup>nd</sup> quarter of 2008) etc. can be used. The designation is stamped on every pressing jaw.
- For this pressfitting system producing a pressing joint with manual radial presses is not permitted.
- Adapter tongs are required for driving pressing rings (PR), see page 176.
- Press fittings made of red bronze (ProPress XL) must be pressed with pressing rings with press contour VUSR, copper fittings (ProPress XL-C) and stainless steel fittings (ProPress XL-S) with pressing rings with press contour VUSF.
- For taking suitable pressing inserts.
- Press fittings made of red bronze (Sanpress XL) must be pressed with pressing rings with press contour VR, copper fittings (Profipress XL, Profipress G XL), carbon steel (Prestabo XL) and stainless steel fittings (Sanpress Inox XL, Sanpress Inox G XL) with pressing rings with press contour VF.
- Driven by REMS Power-Press XL.

The suitability of REMS pressing tools for pressfitting systems: Date 15.10.2018. For the updated situation regarding suitability status check our website: [www.rems.de](http://www.rems.de) → Downloads → Product catalogues, brochures → REMS Catalogue.

Pressing tongs/pressing rings for additional pressfitting systems on request.



# REMS pressing tongs

# REMS pressing rings

Accessories for REMS radial presses (except for REMS Mini-Press)  
and suitable radial presses of other makes

System	Pressing contour	Art.-No.	
IBP >B< Press Carbon	V 12	570107	
	V 15	570115	
	V 18	570125	
	V 22	570135	
	V 28	570145	
	V 35	570155	
	V 42	570165	
	V 54	570175	
	V 12 45° (PR-2B) <sup>3)</sup>	574502 R	
	V 15 45° (PR-2B) <sup>3)</sup>	574504 R	
	V 18 45° (PR-2B) <sup>3)</sup>	574506 R	
	V 22 45° (PR-2B) <sup>3)</sup>	574508 R	
	V 28 45° (PR-2B) <sup>3)</sup>	574510 R	
	V 35 45° (PR-2B) <sup>3)</sup>	574512 R	
	IBP >B< Press Gas	V 15	570115
		V 18	570125
V 22		570135	
V 28		570145	
V 35		570155	
V 42		570165	
V 54		570175	
V 15 45° (PR-2B) <sup>3)</sup>		574504 R	
V 18 45° (PR-2B) <sup>3)</sup>		574506 R	
V 22 45° (PR-2B) <sup>3)</sup>		574508 R	
V 28 45° (PR-2B) <sup>3)</sup>		574510 R	
V 35 45° (PR-2B) <sup>3)</sup>		574512 R	
IBP >B< Press Inox		V 15	570115
		V 18	570125
		V 22	570135
		V 28	570145
	V 35	570155	
	V 42	570165	
	V 54	570175	
	V 15 45° (PR-2B) <sup>3)</sup>	574504 R	
	V 18 45° (PR-2B) <sup>3)</sup>	574506 R	
	V 22 45° (PR-2B) <sup>3)</sup>	574508 R	
	V 28 45° (PR-2B) <sup>3)</sup>	574510 R	
	V 35 45° (PR-2B) <sup>3)</sup>	574512 R	
	IBP >B< Press Solar	V 15	570115
		V 18	570125
		V 22	570135
		V 28	570145
V 35		570155	
V 42		570165	
V 54		570175	
V 15 45° (PR-2B) <sup>3)</sup>		574504 R	
V 18 45° (PR-2B) <sup>3)</sup>		574506 R	
V 22 45° (PR-2B) <sup>3)</sup>		574508 R	
V 28 45° (PR-2B) <sup>3)</sup>		574510 R	
V 35 45° (PR-2B) <sup>3)</sup>		574512 R	
IBP >B< Press XL		XP 64,0 XL (PR-3S) <sup>3)7)</sup>	579100 R
		XP 66,7 XL (PR-3S) <sup>3)7)</sup>	579108 R
		M 76,1 XL (PR-3S) <sup>3)7)</sup>	579101 R
		M 88,9 XL (PR-3S) <sup>3)7)</sup>	579102 R
	M 108,0 XL (PR-3S) <sup>3)7)</sup>	579103 R	
	ICMA Sempiter	H 16*	570320
		H 20*	570350
H 26*		570370	
H 32		570380	
H 40 (4G)		570390	
TH 16*		570460	
TH 20*		570470	
TH 26*		570475	
TH 32		570480	
TH 40		570485	
TH 50 (S)		572400	
TH 63 (S)		572405	
U 16*		570765	
U 20*		570775	
U 32		570785	
U 40		570790	
U 50	570795		
U 63 (PR-3B) <sup>3)</sup>	572837 R		
U 63 (S)	572365		
ICMA Sempigas	TH 16*	570460	
	TH 20*	570470	
	TH 26*	570475	
	TH 32	570480	
Idrosanitaria Bonomi	TH 16*	570460	
	TH 20*	570470	
Homegas	TH 26*	570475	
Idrosanitaria Bonomi	TH 16*	570460	
	TH 18*	570465	
	TH 20*	570470	
	TH 26*	570475	
	TH 32	570480	
	TH 40	570485	
	TH 50 (S)	572400	
	TH 63 (S)	572405	
	Idropress	TH 16*	570460
		TH 18*	570465
TH 20*		570470	
TH 26*		570475	
TH 32		570480	
TH 40		570485	
TH 50 (S)		572400	
TH 63 (S)		572405	

System	Pressing contour	Art.-No.	
IDROSISTEMI Ta-Press	TH 16*	570460	
	TH 20*	570470	
	TH 26*	570475	
	TH 32	570480	
	TH 40	570485	
	TH 50 (S)	572400	
	TH 63 (S)	572405	
	F 16*	570717	
	F 20*	570727	
	F 26*	570730	
	F 32	570735	
	F 16 45° (PR-2B) <sup>3)</sup>	574550 R	
	F 20 45° (PR-2B) <sup>3)</sup>	574552 R	
	F 26 45° (PR-2B) <sup>3)</sup>	574554 R	
	F 32 45° (PR-2B) <sup>3)</sup>	574556 R	
	Fz 40	570742	
	Fz 50	570747	
	F 63 (S)	572385	
	H 16*	570320	
	H 20*	570350	
	H 26*	570370	
	H 32	570380	
	H 40 (4G)	570390	
	U 16*	570765	
	U 20*	570775	
	C 26*	570750	
	U 32	570785	
	U 40	570790	
	U 50	570795	
	U 63 (S)	572365	
	B 16*	570850	
	B 20*	570860	
	B 26	570870	
	B 32	570880	
	IDROTRADE Storm Multipinza	H 16*	570320
		H 20*	570350
H 26*		570370	
H 32		570380	
TH 16*		570460	
TH 20*		570470	
TH 26*		570475	
TH 32		570480	
TH 40		570485	
TH 50 (S)		572400	
U 16*		570765	
U 20*		570775	
U 40		570790	
U 50		570795	
IDROTRADE Storm Multistrato		H 14*	570310
		H 16*	570320
	H 20*	570350	
	H 26*	570370	
	H 32	570380	
	H 40	570390	
	U 50	570795	
	U 63 (PR-3B) <sup>3)</sup>	572837 R	
	IDROTRADE StormPRES	M 15	570110
		M 18	570120
		M 22	570130
		M 28	570140
		M 35	570150
		M 42 (PR-3S) <sup>3)</sup>	572706 R
		M 54 (PR-3S) <sup>3)</sup>	572708 R
		IDROTRADE StormSTEEL	M 12
M 15			570110
M 18			570120
M 22			570130
M 28			570140
M 35			570150
M 42 (PR-3S) <sup>3)</sup>			572706 R
M 54 (PR-3S) <sup>3)</sup>			572708 R
ILTA INOX/CHIBRO Pressfitting Cuni			M 15
	M 18		570120
	M 22		570130
	M 28		570140
	M 35		570150
	M 42 (PR-3S) <sup>3)</sup>		572706 R
	M 54 (PR-3S) <sup>3)</sup>		572708 R
	M 76,1 XL (PR-3S) <sup>3)7)</sup>		579101 R
	M 88,9 XL (PR-3S) <sup>3)7)</sup>	579102 R	
	M 108,0 XL (PR-3S) <sup>3)7)</sup>	579103 R	
	M 15 45° (PR-2B) <sup>3)</sup>	574522 R	
	M 18 45° (PR-2B) <sup>3)</sup>	574524 R	
	M 22 45° (PR-2B) <sup>3)</sup>	574526 R	
	M 28 45° (PR-2B) <sup>3)</sup>	574528 R	
	M 35 45° (PR-2B) <sup>3)</sup>	574530 R	
	ILTA INOX/CHIBRO Pressfitting inox	M 15	570110
M 18		570120	
M 22		570130	
M 28		570140	
M 35		570150	
M 42 (PR-3S) <sup>3)</sup>		572706 R	
M 54 (PR-3S) <sup>3)</sup>		572708 R	
M 76,1 XL (PR-3S) <sup>3)7)</sup>		579101 R	
M 88,9 XL (PR-3S) <sup>3)7)</sup>		579102 R	
M 108,0 XL (PR-3S) <sup>3)7)</sup>		579103 R	
M 15 45° (PR-2B) <sup>3)</sup>		574522 R	
M 18 45° (PR-2B) <sup>3)</sup>		574524 R	
M 22 45° (PR-2B) <sup>3)</sup>		574526 R	
M 28 45° (PR-2B) <sup>3)</sup>		574528 R	
M 35 45° (PR-2B) <sup>3)</sup>		574530 R	

System	Pressing contour	Art.-No.	
IPA IPANA Press	TH 10*	570467	
	TH 11,6*	570482	
	TH 12*	570452	
	TH 14*	570455	
	TH 15*	570457	
	TH 16*	570460	
	TH 17*	570462	
	TH 18*	570465	
	TH 20*	570470	
	TH 22*	570472	
	TH 25*	570495	
	TH 26*	570475	
	TH 28	570477	
	TH 32	570480	
	TH 40	570485	
	TH 50 (S)	572400	
TH 63 (S)	572405		
THz 75 (PR-3B) <sup>3)</sup>	572829 R		
IPA THu IPANA Press	TH 16*	570460	
	TH 20*	570470	
	TH 26*	570475	
	TH 32	570480	
IPALPEX (Industrie du Plastique et Accessoires)	TH 14*	570455	
	TH 16*	570460	
	TH 18*	570465	
	TH 20*	570470	
IPLEX	TH 26*	570475	
	THL 32	570487	
	TH 40	570485	
	TH 50 (S)	572400	
	TH 63 (S)	572405	
	K16/P18*	572600	
	PF 22*	571980	
	PIPELINES AUSTRALIA Iplex Pro-fit	K16/P18*	572600
		K/20*	572605
		K/25*	572610
K32		572615	
K1/40		572620	
K1/50		572625	
IPLEX PIPELINES AUSTRALIA	K16/P18*	572600	
	K/20*	572605	
	K/25*	572610	
Iplex K2	RFz 16*	571325	
	RFz 20*	571330	
	RFz 25	571337	
	RFz 32	571342	
ISOLTUBEX Multicapa	RFz 16*	571325	
	RFz 20*	571330	
	RFz 25	571337	
	RFz 32	571342	
	U 16*	570765	
	U 20*	570775	
ISOLTUBEX Multicapa GAS	U 25*	570780	
	U 32	570785	
	U 40	570790	
	U 50	570795	
	U 63 (PR-3B) <sup>3)</sup>	572837 R	
	U 63 (S)	572365	
	RFz 16*	571325	
	RFz 20*	571330	
	RFz 25	571337	
	RFz 32	571342	
ISOTUBI NUMEPRESS	M 15	570110	
	M 18 <sup>1)</sup>	570120	
	M 22	570130	
	M 28 <sup>1)</sup>	570140	
	M 35	570150	
	M 42 (PR-3S) <sup>3)</sup>	572706 R	
	M 54 (PR-3S) <sup>3)</sup>	572708 R	
	M 76,1 XL (PR-3S) <sup>3)7)</sup>	579101 R	
	M 88,9 XL (PR-3S) <sup>3)7)</sup>	579102 R	
	M 108,0 XL (PR-3S) <sup>3)7)</sup>	579103 R	
IVAR Ivar-Press	B 14*	570845	
	B 16*	570850	
	B 18*	570855	
	B 20*	570860	
	B 26	570870	
	B 32	570880	
	Fz 40	570742	
	Fz 50	570747	
	F 63 (S)	572385	
	IVAR MULTI PRESS GAS	TH 16*	570460
TH 20*		570470	
TH 26*		570475	
TH 32		570480	
B 16*		570850	
B 20*		570860	
B 26		570870	
B 32		570880	

# REMS pressing tongs REMS pressing rings

Accessories for REMS radial presses (except for REMS Mini-Press)  
and suitable radial presses of other makes

System	Pressing contour	Art.-No.	
IVAR MULTI PRESS GAS ITALIA	TH 16*	570460	
	TH 20*	570470	
	TH 26*	570475	
	TH 32	570480	
	H 16*	570320	
	H 20*	570350	
	H 26*	570370	
	H 32	570380	
	U 16*	570765	
	U 20*	570775	
	U 32	570785	
	IVAR Multi Press MP	TH 16*	570460
	TH 18*	570465	
	TH 20*	570470	
TH 25*	570495		
TH 26*	570475		
TH 32	570480		
TH 40	570485		
TH 50 (S)	572400		
TH 63 (S)	572405		
F 16*	570717		
F 18*	570720		
F 20*	570727		
F 26*	570730		
F 32	570735		
Fz 40	570742		
Fz 50	570747		
F 63 (S)	572385		
F 16 45° (PR-2B) <sup>3)</sup>	574550 R		
F 20 45° (PR-2B) <sup>3)</sup>	574552 R		
F 26 45° (PR-2B) <sup>3)</sup>	574554 R		
F 32 45° (PR-2B) <sup>3)</sup>	574556 R		
H 16*	570320		
H 18*	570340		
H 20*	570350		
H 25*	570360		
H 26*	570370		
H 32	570380		
H 40 (4G)	570390		
U 16*	570765		
U 18*	570770		
U 20*	570775		
U 25*	570780		
C 26*	570750		
U 32	570785		
U 40	570790		
U 50	570795		
U 63 (S)	572365		
B 16*	570850		
B 18*	570855		
B 20*	570860		
B 26	570870		
B 32	570880		
IVAR Multi Press Leak (MPL)	TH 16*	570460	
TH 20*	570470		
TH 26*	570475		
TH 32	570480		
F 16*	570717		
F 20*	570727		
F 26*	570730		
F 32	570735		
F 16 45° (PR-2B) <sup>3)</sup>	574550 R		
F 20 45° (PR-2B) <sup>3)</sup>	574552 R		
F 26 45° (PR-2B) <sup>3)</sup>	574554 R		
F 32 45° (PR-2B) <sup>3)</sup>	574556 R		
H 16*	570320		
H 20*	570350		
H 26*	570370		
H 32	570380		
U 16*	570765		
U 20*	570775		
C 26*	570750		
U 32	570785		
B 16*	570850		
B 20*	570860		
B 26	570870		
B 32	570880		

System	Pressing contour	Art.-No.	
IVAR	TH 16*	570460	
Plastic Multi Press Leak (PMPL)	TH 20*	570470	
	TH 26*	570475	
	TH 32	570480	
	F 16*	570717	
	F 20*	570727	
	F 26*	570730	
	F 32	570735	
	F 16 45° (PR-2B) <sup>3)</sup>	574550 R	
	F 20 45° (PR-2B) <sup>3)</sup>	574552 R	
	F 26 45° (PR-2B) <sup>3)</sup>	574554 R	
	F 32 45° (PR-2B) <sup>3)</sup>	574556 R	
	H 16*	570320	
	H 20*	570350	
	H 26*	570370	
H 32	570380		
U 16*	570765		
U 20*	570775		
C 26*	570750		
U 32	570785		
B 16*	570850		
B 20*	570860		
B 26	570870		
B 32	570880		
IVAR Plastic Multi Press PMP	TH 16*	570460	
TH 20*	570470		
TH 25*	570495		
TH 26*	570475		
TH 32	570480		
F 16*	570717		
F 20*	570727		
F 26*	570730		
F 32	570735		
F 16 45° (PR-2B) <sup>3)</sup>	574550 R		
F 20 45° (PR-2B) <sup>3)</sup>	574552 R		
F 26 45° (PR-2B) <sup>3)</sup>	574554 R		
F 32 45° (PR-2B) <sup>3)</sup>	574556 R		
H 16*	570320		
H 20*	570350		
H 25*	570360		
H 26*	570370		
H 32	570380		
U 16*	570765		
U 20*	570775		
U 25*	570780		
C 26*	570750		
U 32	570785		
B 16*	570850		
B 20*	570860		
B 26	570870		
B 32	570880		
IVT PRIPRESS	TH 16*	570460	
TH 20*	570470		
TH 26*	570475		
TH 32	570480		
<b>J</b>			
Jäger - Aquatec	H 14*	570310	
Aquapress H	H 16*	570320	
	H 17*	570330	
	H 18*	570340	
	H 20*	570350	
	H 26*	570370	
	H 32	570380	
	U 40	570790	
	U 50	570795	
	U 63 (S)	572365	
	Jäger - Aquatec	M 15	570110
	C-Stahl - Press Typ M	M 18	570120
		M 22	570130
		M 28	570140
		M 35	570150
M 42 (PR-3S) <sup>3)</sup>		572706 R	
M 54 (PR-3S) <sup>3)</sup>		572708 R	
M 76,1 XL (PR-3S) <sup>3) 7)</sup>		579101 R	
M 88,9 XL (PR-3S) <sup>3) 7)</sup>		579102 R	
M 108,0 XL (PR-3S) <sup>3) 7)</sup>		579103 R	
M 15 45° (PR-2B) <sup>3)</sup>		574522 R	
M 18 45° (PR-2B) <sup>3)</sup>		574524 R	
M 22 45° (PR-2B) <sup>3)</sup>		574526 R	
M 28 45° (PR-2B) <sup>3)</sup>		574528 R	
M 35 45° (PR-2B) <sup>3)</sup>		574530 R	

System	Pressing contour	Art.-No.	
Jäger - Aquatec	M 15	570110	
Edelstahl-Press Typ M	M 18	570120	
	M 22	570130	
	M 28	570140	
	M 35	570150	
	M 42 (PR-3S) <sup>3)</sup>	572706 R	
	M 54 (PR-3S) <sup>3)</sup>	572708 R	
	M 76,1 XL (PR-3S) <sup>3) 7)</sup>	579101 R	
	M 88,9 XL (PR-3S) <sup>3) 7)</sup>	579102 R	
	M 108,0 XL (PR-3S) <sup>3) 7)</sup>	579103 R	
	M 15 45° (PR-2B) <sup>3)</sup>	574522 R	
	M 18 45° (PR-2B) <sup>3)</sup>	574524 R	
	M 22 45° (PR-2B) <sup>3)</sup>	574526 R	
	M 28 45° (PR-2B) <sup>3)</sup>	574528 R	
	M 35 45° (PR-2B) <sup>3)</sup>	574530 R	
Jäger - Aquatec	V 15	570115	
Kupfer-Press Typ V	V 18	570125	
	V 22	570135	
	V 28	570145	
	V 35	570155	
	V 42	570165	
	V 54	570175	
	V 15 45° (PR-2B) <sup>3)</sup>	574504 R	
	V 18 45° (PR-2B) <sup>3)</sup>	574506 R	
	V 22 45° (PR-2B) <sup>3)</sup>	574508 R	
	V 28 45° (PR-2B) <sup>3)</sup>	574510 R	
	V 35 45° (PR-2B) <sup>3)</sup>	574512 R	
	Jansen	TH 14*	570455
	JANSEN prima	TH 16*	570460
		TH 18*	570465
TH 20*		570470	
TH 25*		570495	
TH 26*		570475	
TH 32		570480	
TH 40		570485	
TH 50 (S)		572400	
TH 63 (S)		572405	
Jaraflex- Presssystem		TH 14*	570455
TH 16*		570460	
TH 18*		570465	
TH 20*		570470	
TH 25*		570495	
TH 26*	570475		
TH 32	570480		
TH 40	570485		
TH 50 (S)	572400		
TH 63 (S)	572405		
JUNGWOO	VUS ½" (OD 15,9 mm)	571770	
JWPress	VUS ¾" (OD 22,2 mm)	571775	
	VUS 1" (OD 28,6 mm)	571780	
	VUS 1¼" (OD 34,9 mm)	571785	
	VUS 1½" (OD 41,3 mm)	571790	
	VUS 2" (OD 54,0 mm)	571795	
	VUSFz 2½" (PR-3B) <sup>3)</sup> (OD 66,7 mm)	572819 R	
	VUSFz 3" (PR-3B) <sup>3)</sup> (OD 79,4 mm)	572820 R	
	VUSFz 4" (PR-3B) <sup>3)</sup> (OD 104,8 mm)	572821 R	
	<b>K</b>		
	KAN	U 16*	570765
	KAN-therm	U 20*	570775
		U 25*	570780
		C 26*	570750
		U 32	570785
U 40		570790	
TH 50 (S)		572400	
TH 63 (S)		572405	

Pressfitting systems for gas installations must only be pressed with pressing tongs/pressing rings which are highlighted in yellow.  
Observe the national regulations.

\* These pressing tongs also fit the manual radial press REMS Eco-Press. Observe the national regulations.

- Only pressing tongs from designation "108" (1<sup>st</sup> quarter of 2008), "208" (2<sup>nd</sup> quarter of 2008) etc. can be used. The designation is stamped on every pressing jaw.
- For this pressfitting system producing a pressing joint with manual radial presses is not permitted.
- Adapter tongs are required for driving pressing rings (PR), see page 176.
- Press fittings made of red bronze (ProPress XL) must be pressed with pressing rings with press contour VUSR, copper fittings (ProPress XL-C) and stainless steel fittings (ProPress XL-S) with pressing rings with press contour VUSF.
- For taking suitable pressing inserts.
- Press fittings made of red bronze (Sanpress XL) must be pressed with pressing rings with press contour VR, copper fittings (Profipress XL, Profipress G XL), carbon steel (Prestabo XL) and stainless steel fittings (Sanpress Inox XL, Sanpress Inox G XL) with pressing rings with press contour VF.
- Driven by REMS Power-Press XL.

The suitability of REMS pressing tools for pressfitting systems: Date 15.10.2018. For the updated situation regarding suitability status check our website:  
[www.rems.de](http://www.rems.de) → Downloads → Product catalogues, brochures → REMS Catalogue.

Pressing tongs/pressing rings for additional pressfitting systems on request.

System	Pressing contour	Art.-No.
KAN	U 14*	570760
KAN-therm LBP	U 16*	570765
	U 20*	570775
	U 25*	570780
	C 26*	570750
	U 32	570785
	U 40	570790
	TH 14*	570455
	TH 16*	570460
	TH 20*	570470
	TH 25*	570495
	TH 26*	570475
	TH 32	570480
	TH 40	570485
	TH 50 (S)	572400
	TH 63 (S)	572405
KAN	M 15	570110
KAN-therm	M 18 <sup>1)</sup>	570120
Inox	M 22	570130
	M 28 <sup>1)</sup>	570140
	M 35	570150
	M 42 (4G)	570160
	M 54 (4G)	570170
	M 42 (PR-3S) <sup>3)</sup>	572706 R
	M 54 (PR-3S) <sup>3)</sup>	572708 R
	M 76,1 XL (PR-3S) <sup>3) 7)</sup>	579101 R
	M 88,9 XL (PR-3S) <sup>3) 7)</sup>	579102 R
	XP 108,0 XL (PR-3S) <sup>3) 7)</sup>	579109 R
	M 15 45° (PR-2B) <sup>3)</sup>	574522 R
	M 18 45° (PR-2B) <sup>3)</sup>	574524 R
	M 22 45° (PR-2B) <sup>3)</sup>	574526 R
	M 28 45° (PR-2B) <sup>3)</sup>	574528 R
	M 35 45° (PR-2B) <sup>3)</sup>	574530 R
KAN	M 15	570110
KAN-therm	M 18 <sup>1)</sup>	570120
Steel	M 22	570130
	M 28 <sup>1)</sup>	570140
	M 35	570150
	M 42 (4G)	570160
	M 54 (4G)	570170
	M 42 (PR-3S) <sup>3)</sup>	572706 R
	M 54 (PR-3S) <sup>3)</sup>	572708 R
	M 76,1 XL (PR-3S) <sup>3) 7)</sup>	579101 R
	M 88,9 XL (PR-3S) <sup>3) 7)</sup>	579102 R
	XP 108,0 XL (PR-3S) <sup>3) 7)</sup>	579109 R
	M 15 45° (PR-2B) <sup>3)</sup>	574522 R
	M 18 45° (PR-2B) <sup>3)</sup>	574524 R
	M 22 45° (PR-2B) <sup>3)</sup>	574526 R
	M 28 45° (PR-2B) <sup>3)</sup>	574528 R
	M 35 45° (PR-2B) <sup>3)</sup>	574530 R
KE KELIT	U 16*	570765
KELIT KELOX	U 18*	570770
	U 20*	570775
	U 25*	570780
	U 32	570785
	U 40	570790
	U 50	570795
	U 63 (S)	572365
	U 75 (PR-3B) <sup>3)</sup>	572828 R
KE KELIT	M 15	570110
COPPERFIX	M 18	570120
Kupfer	M 22	570130
	M 28	570140
	M 35	570150
	M 42 (PR-3S) <sup>3)</sup>	572706 R
	M 54 (PR-3S) <sup>3)</sup>	572708 R
	M 76,1 XL (PR-3S) <sup>3) 7)</sup>	579101 R
	M 88,9 XL (PR-3S) <sup>3) 7)</sup>	579102 R
	M 108,0 XL (PR-3S) <sup>3) 7)</sup>	579103 R
	M 15 45° (PR-2B) <sup>3)</sup>	574522 R
	M 18 45° (PR-2B) <sup>3)</sup>	574524 R
	M 22 45° (PR-2B) <sup>3)</sup>	574526 R
	M 28 45° (PR-2B) <sup>3)</sup>	574528 R
	M 35 45° (PR-2B) <sup>3)</sup>	574530 R
KE KELIT	M 15	570110
steelFIX	M 18	570120
C-Stahl	M 22	570130
	M 28	570140
	M 35	570150
	M 42 (PR-3S) <sup>3)</sup>	572706 R
	M 54 (PR-3S) <sup>3)</sup>	572708 R
	M 76,1 XL (PR-3S) <sup>3) 7)</sup>	579101 R
	M 88,9 XL (PR-3S) <sup>3) 7)</sup>	579102 R
	M 108,0 XL (PR-3S) <sup>3) 7)</sup>	579103 R
	M 15 45° (PR-2B) <sup>3)</sup>	574522 R
	M 18 45° (PR-2B) <sup>3)</sup>	574524 R
	M 22 45° (PR-2B) <sup>3)</sup>	574526 R
	M 28 45° (PR-2B) <sup>3)</sup>	574528 R
	M 35 45° (PR-2B) <sup>3)</sup>	574530 R
KME	TH 14*	570455
cuprotherm CTX	TH 16*	570460
	TH 18*	570465
	TH 20*	570470
	TH 26*	570475
KME	TH 14*	570455
Q-Tec - Comap	TH 16*	570460
SkinPress	TH 20*	570470
	TH 26*	570475
KME	H 16 A*	570620
Q-Tec - Oventrop	H 20 A*	570650
Cofit	H 26 A*	570670

System	Pressing contour	Art.-No.
KE KELIT	M 15	570110
steelFIX	M 18	570120
Edelstahl	M 22	570130
	M 28	570140
	M 35	570150
	M 42 (PR-3S) <sup>3)</sup>	572706 R
	M 54 (PR-3S) <sup>3)</sup>	572708 R
	M 76,1 XL (PR-3S) <sup>3) 7)</sup>	579101 R
	M 88,9 XL (PR-3S) <sup>3) 7)</sup>	579102 R
	M 108,0 XL (PR-3S) <sup>3) 7)</sup>	579103 R
	M 15 45° (PR-2B) <sup>3)</sup>	574522 R
	M 18 45° (PR-2B) <sup>3)</sup>	574524 R
	M 22 45° (PR-2B) <sup>3)</sup>	574526 R
	M 28 45° (PR-2B) <sup>3)</sup>	574528 R
	M 35 45° (PR-2B) <sup>3)</sup>	574530 R
KEMBLA	VAU 15 (OD 12,7 mm)	572687
KemPress	VAU 20 (OD 19,1 mm)	572689
(AUS)	VAU 25 (OD 25,4 mm)	572691
	VAU 32 (OD 31,8 mm)	572693
	VAU 40 (OD 38,1 mm)	572695
	VAU 50 (OD 50,8 mm)	572697
KEMBLA	VAU 15 (OD 12,7 mm)	572687
KemPress Gas	VAU 20 (OD 19,1 mm)	572689
(AUS)	VAU 25 (OD 25,4 mm)	572691
	VAU 32 (OD 31,8 mm)	572693
	VAU 40 (OD 38,1 mm)	572695
	VAU 50 (OD 50,8 mm)	572697
KISAN	KI 16*	571360
Kisan KD	KI 20*	571370
	KI 25*	571375
	TH 16*	570460
	TH 20*	570470
	TH 25*	570495
KISAN	KI 16*	571360
Kisan WL	KI 20*	571370
	KI 25*	571375
	KI 32	571380
	TH 16*	570460
	TH 20*	570470
	TH 25*	570495
	TH 32	570480
KISAN	KI 16*	571360
Kisan WM	KI 20*	571370
	KI 25*	571375
	KI 32	571380
KISAN	U 20*	570775
Kisan WR	U 25*	570780
	U 32	570785
	U 40	570790
	U 50	570795
	U 63 (S)	572365
	U 75 (PR-3B) <sup>3)</sup>	572828 R
KISAN	M 15	570110
Kistal C	M 18	570120
	M 22	570130
	M 28	570140
	M 35	570150
	M 42 (PR-3S) <sup>3)</sup>	572706 R
	M 54 (PR-3S) <sup>3)</sup>	572708 R
	M 76,1 XL (PR-3S) <sup>3) 7)</sup>	579101 R
	M 88,9 XL (PR-3S) <sup>3) 7)</sup>	579102 R
	M 108,0 XL (PR-3S) <sup>3) 7)</sup>	579103 R
	M 15 45° (PR-2B) <sup>3)</sup>	574522 R
	M 18 45° (PR-2B) <sup>3)</sup>	574524 R
	M 22 45° (PR-2B) <sup>3)</sup>	574526 R
	M 28 45° (PR-2B) <sup>3)</sup>	574528 R
	M 35 45° (PR-2B) <sup>3)</sup>	574530 R
KISAN	M 15	570110
Kistal Inox	M 18	570120
	M 22	570130
	M 28	570140
	M 35	570150
	M 42 (PR-3S) <sup>3)</sup>	572706 R
	M 54 (PR-3S) <sup>3)</sup>	572708 R
	M 76,1 XL (PR-3S) <sup>3) 7)</sup>	579101 R
	M 88,9 XL (PR-3S) <sup>3) 7)</sup>	579102 R
	M 108,0 XL (PR-3S) <sup>3) 7)</sup>	579103 R
	M 15 45° (PR-2B) <sup>3)</sup>	574522 R
	M 18 45° (PR-2B) <sup>3)</sup>	574524 R
	M 22 45° (PR-2B) <sup>3)</sup>	574526 R
	M 28 45° (PR-2B) <sup>3)</sup>	574528 R
	M 35 45° (PR-2B) <sup>3)</sup>	574530 R
KME	TH 14*	570455
cuprotherm CTX	TH 16*	570460
	TH 18*	570465
	TH 20*	570470
	TH 26*	570475
KME	TH 14*	570455
Q-Tec - Comap	TH 16*	570460
SkinPress	TH 20*	570470
	TH 26*	570475
KME	H 16 A*	570620
Q-Tec - Oventrop	H 20 A*	570650
Cofit	H 26 A*	570670

System	Pressing contour	Art.-No.
<b>L</b>		
LECHAR	TH 16*	570460
ALCOBRAPEX	TH 20*	570470
	TH 26*	570475
	TH 32	570480
	TH 40	570485
LECHAR	U 16*	570765
COBRAPEX	U 20*	570775
	U 25*	570780
	U 32	570785
LEGEND-PRESS	VUS 1/2" (OD 15,9 mm)	571770
press fitting	VUS 3/4" (OD 22,2 mm)	571775
system	VUS 1" (OD 28,6 mm)	571780
	VUS 1 1/4" (OD 34,9 mm)	571785
	VUS 1 1/2" (OD 41,3 mm)	571790
	VUS 2" (OD 54,0 mm)	571795
	VUSFz 2 1/2" (PR-3B) <sup>3)</sup>	572819 R
	(OD 66,7 mm)	
	VUSFz 3" (PR-3B) <sup>3)</sup>	572820 R
	(OD 79,4 mm)	
	VUSFz 4" (PR-3B) <sup>3)</sup>	572821 R
	(OD 104,8 mm)	
LK Systems	V 12	570107
LK >B<-Press	V 15	570115
	V 18	570125
	V 22	570135
	V 28	570145
	V 35	570155
	V 42	570165
	V 54	570175
	V 12 45° (PR-2B) <sup>3)</sup>	574502 R
	V 15 45° (PR-2B) <sup>3)</sup>	574504 R
	V 18 45° (PR-2B) <sup>3)</sup>	574506 R
	V 22 45° (PR-2B) <sup>3)</sup>	574508 R
	V 28 45° (PR-2B) <sup>3)</sup>	574510 R
	V 35 45° (PR-2B) <sup>3)</sup>	574512 R
LK Systems	V 12	570107
LK >B<-Press	V 15	570115
Elförzinkat	V 18	570125
	V 22	570135
	V 28	570145
	V 35	570155
	V 42	570165
	V 54	570175
	V 12 45° (PR-2B) <sup>3)</sup>	574502 R
	V 15 45° (PR-2B) <sup>3)</sup>	574504 R
	V 18 45° (PR-2B) <sup>3)</sup>	574506 R
	V 22 45° (PR-2B) <sup>3)</sup>	574508 R
	V 28 45° (PR-2B) <sup>3)</sup>	574510 R
	V 35 45° (PR-2B) <sup>3)</sup>	574512 R
LK Systems	V 15	570115
LK >B<-Press	V 18	570125
Gas	V 22	570135
	V 28	570145
	V 35	570155
	V 42	570165
	V 54	570175
	V 15 45° (PR-2B) <sup>3)</sup>	574504 R
	V 18 45° (PR-2B) <sup>3)</sup>	574506 R
	V 22 45° (PR-2B) <sup>3)</sup>	574508 R
	V 28 45° (PR-2B) <sup>3)</sup>	574510 R
	V 35 45° (PR-2B) <sup>3)</sup>	574512 R
LK Systems	TH 16*	570460
LK Universal	TH 20*	570470
	TH 25*	570495
	TH 32	570480
	TH 40	570485
	TH 50 (S)	572400
	TH 63 (S)	572405
LVI-DAHL	U 16*	570765
Altech-Alupex	U 20*	570775
	U 25*	570780
	U 32	570785
<b>M</b>		
MAINCOR	U 16*	570765
MAINPRESS	U 20*	570775
	U 25*	570780
	U 32	570785
	U 40	570790
	U 50	570795
	U 63 (S)	572365
	U 63 (PR-3B) <sup>3)</sup>	572837 R
MAINCOR	U 16*	570765
MAINFLOR	U 20*	570775
Mair Heiztechnik	M 12	570100
Gomafix Cu/E	M 15	570110
	M 18 <sup>1)</sup>	570120
	M 22	570130
	M 12 45° (PR-2B) <sup>3)</sup>	574520 R
	M 15 45° (PR-2B) <sup>3)</sup>	574522 R
	M 18 45° (PR-2B) <sup>3)</sup>	574524 R
	M 22 45° (PR-2B) <sup>3)</sup>	574526 R

# REMS pressing tongs REMS pressing rings

Accessories for REMS radial presses (except for REMS Mini-Press)  
and suitable radial presses of other makes

System	Pressing contour	Art.-No.	
Mair Heiztechnik Gomafix M	H 11,5*	570315	
	H 14*	570310	
	H 16*	570320	
	H 20*	570350	
Mair Heiztechnik M-Press	H 11,5*	570315	
	H 14*	570310	
	H 16*	570320	
	H 20*	570350	
	H 26*	570370	
	H 32	570380	
	U 40	570790	
Ma.s.ter System PRESSMASTER	TH 14*	570455	
	TH 16*	570460	
	TH 18*	570465	
	TH 20*	570470	
	TH 25*	570495	
	TH 26*	570475	
	TH 32	570480	
	TH 40	570485	
	TH 50 (S)	572400	
	TH 63 (S)	572405	
	H 14*	570310	
	H 16*	570320	
	H 18*	570340	
	H 20*	570350	
	H 26*	570370	
	H 32	570380	
	H 40 (4G)	570390	
	U 14*	570760	
	U 16*	570765	
	U 18*	570770	
	U 20*	570775	
	U 25*	570780	
	U 32	570785	
	U 40	570790	
	U 50	570795	
	U 63 (PR-3B) <sup>3)</sup>	572837 R	
	U 63 (S)	572365	
	METALGRUP Permatubo	U 16*	570765
		U 18*	570770
		U 20*	570775
		U 25*	570780
		U 32	570785
		U 40	570790
U 50		570795	
U 63 (PR-3B) <sup>3)</sup>		572837 R	
U 63 (S)		572365	
METALGRUP PexGrup		RFz 16*	571325
	RFz 20*	571330	
	RFz 25	571335	
	RFz 32	571340	
METALGRUP MultiGrup	U 16*	570765	
	U 18*	570770	
	U 20*	570775	
	U 25*	570780	
	U 32	570785	
Mueller Industries Streamline PRS	VUS ½" (OD 15,9 mm)	571770	
	VUS ¾" (OD 22,2 mm)	571775	
	VUS 1" (OD 28,6 mm)	571780	
	VUS 1¼" (OD 34,9 mm)	571785	
	VUS 1½" (OD 41,3 mm)	571790	
	VUS 2" (OD 54,0 mm)	571795	
	VUSFz 2½" (PR-3B) <sup>3)</sup> 6)	572819 R	
	VUSFz 3" (PR-3B) <sup>3)</sup> 6)	572820 R	
MULTITHERM PRESSSYSTEM	TH 16*	570460	
	TH 20*	570470	
	TH 26*	570475	
	TH 32	570480	
	TH 40	570485	
	TH 50 (S)	572400	
	TH 63 (S)	572405	
	THz 75 (PR-3B) <sup>3)</sup>	572829 R	

System	Pressing contour	Art.-No.	
Multicapas Industrial AIS PEX	RFz 16*	571325	
	RFz 20*	571330	
	RFz 25	571335	
	RFz 32	571340	
	U 16*	570765	
	U 20*	570775	
	U 25*	570780	
	U 32	570785	
	Multicapas Industrial	MT 20*	571744
		MT 25*	571746
		MT 32	571748
	multitubo systems MC	U 16*	570765
		U 18*	570770
		U 20*	570775
		U 25*	570780
U 32		570785	
U 40		570790	
U 50		570795	
U 63 (S)		572365	
U 63 (PR-3B) <sup>3)</sup>		572837 R	
U 75 (PR-3B) <sup>3)</sup>		572828 R	
Multicapas Industrial		H 16*	570320
		H 20*	570350
multitubo systems MM	H 25*	570360	
	H 26*	570370	
	H 32	570380	
N	MT 20*	571744	
	MT 25*	571746	
	MT 32	571748	
	RFz 16*	571325	
	RFz 20*	571330	
	RFz 25	571335	
	RFz 32	571340	
	TH 16*	570460	
	TH 20*	570470	
	TH 25*	570495	
	TH 26*	570475	
	TH 32	570480	
	TH 40	570485	
	TH 50 (S)	572400	
	THz 75 (PR-3B) <sup>3)</sup>	572829 R	
	U 16*	570765	
	U 20*	570775	
	U 25*	570780	
	U 32	570785	
	U 40	570790	
U 50	570795		
U 63 (S)	572365		
U 63 (PR-3B) <sup>3)</sup>	572837 R		
U 75 (PR-3B) <sup>3)</sup>	572828 R		
NEUTHERM MEKUPRESS-HT	H 16*	570320	
	H 20*	570350	
	H 26*	570370	
	H 32	570380	
	H 40 (4G)	570390	
	U 40	570790	
	NIBCO (USA) Press System Copper	VUS ½" (OD 15,9 mm)	571770
		VUS ¾" (OD 22,2 mm)	571775
VUS 1" (OD 28,6 mm)		571780	
VUS 1¼" (OD 34,9 mm)		571785	
VUS 1½" (OD 41,3 mm)		571790	
VUS 2" (OD 54,0 mm)		571795	
Nicolli Fluxo	TH 16*	570460	
	TH 20*	570470	
	TH 26*	570475	
	TH 32	570480	
	TH 40	570485	
	TH 50 (S)	572400	
	TH 63 (S)	572405	
	THz 75 (PR-3B) <sup>3)</sup>	572829 R	

System	Pressing contour	Art.-No.
NUPI Industrie Italiane Multinupi	B 16*	570850
	B 18*	570855
	B 20*	570860
	B 26	570870
	B 32	570880
	F 16*	570717
	F 18*	570720
	F 20*	570727
	F 26*	570730
	F 32	570735
	F 16 45° (PR-2B) <sup>3)</sup>	574550 R
	F 20 45° (PR-2B) <sup>3)</sup>	574552 R
	F 26 45° (PR-2B) <sup>3)</sup>	574554 R
	F 32 45° (PR-2B) <sup>3)</sup>	574556 R
	H 16*	570320
	H 18*	570340
	H 20*	570350
	H 26*	570370
	H 32	570380
	TH 16*	570460
	TH 18*	570465
	TH 20*	570470
	TH 26*	570475
	TH 32	570480
	U 14*	570760
	U 16*	570765
	U 18*	570770
	U 20*	570775
	C 26*	570750
	U 32	570785
	U 40	570790
	U 50	570795
	U 63 (PR-3B) <sup>3)</sup>	572837 R
U 63 (S)	572365	
Nussbaum Optifitt-Press	VMP ¾" (OD 17,2 mm)	571740
	VMP ½" (OD 21,3 mm)	571762
	VMPz ¾" (OD 26,9 mm)	571764
	VMPz 1" (OD 33,7 mm)	571767
	VMPz 1¼" (S) (OD 42,4 mm)	572413
Nussbaum Optiflex-Flowpress	VMPz 1½" (PR-3B) <sup>3)</sup> (OD 48,3 mm)	572844 R
	VMPz 2" (PR-3B) <sup>3)</sup> (OD 60,3 mm)	572845 R
	VRX 16	571750
Nussbaum Optiflex Press	VRX 20	571752
	VRX 25	571754
	VRX 32	571756
	VRX 40	571758
	VRX 50	571760
	VRX 63	571797
	VP 16*	570910
VP 20*	570915	
Nussbaum Optipress AquaPlus	VP 25*	570920
	VP 32	570925
	V 15	570115
	V 18	570125
	V 22	570135
	V 28	570145
	V 35	570155
	V 42	570165
	V 54	570175
	Vfz 64,0 (PR-3B) <sup>3)</sup>	572815 R
Vfz 76,1 (PR-3B) <sup>3)</sup>	572816 R	
Vfz 88,9 (PR-3B) <sup>3)</sup>	572817 R	
Vfz 108,0 (PR-3B) <sup>3)</sup>	572818 R	
V 15 45° (PR-2B) <sup>3)</sup>	574504 R	
V 18 45° (PR-2B) <sup>3)</sup>	574506 R	
V 22 45° (PR-2B) <sup>3)</sup>	574508 R	
V 28 45° (PR-2B) <sup>3)</sup>	574510 R	
V 35 45° (PR-2B) <sup>3)</sup>	574512 R	

Pressfitting systems for gas installations must only be pressed with pressing tongs/pressing rings which are highlighted in yellow.  
Observe the national regulations.

\* These pressing tongs also fit the manual radial press REMS Eco-Press. Observe the national regulations.

- Only pressing tongs from designation "108" (1<sup>st</sup> quarter of 2008), "208" (2<sup>nd</sup> quarter of 2008) etc. can be used. The designation is stamped on every pressing jaw.
- For this pressfitting system producing a pressing joint with manual radial presses is not permitted.
- Adapter tongs are required for driving pressing rings (PR), see page 176.
- Press fittings made of red bronze (ProPress XL) must be pressed with pressing rings with press contour VUSR, copper fittings (ProPress XL-C) and stainless steel fittings (ProPress XL-S) with pressing rings with press contour VUSF.
- For taking suitable pressing inserts.
- Press fittings made of red bronze (Sanpress XL) must be pressed with pressing rings with press contour VR, copper fittings (Profipress XL, Profipress G XL), carbon steel (Prestabo XL) and stainless steel fittings (Sanpress Inox XL, Sanpress Inox G XL) with pressing rings with press contour VF.
- Driven by REMS Power-Press XL.

The suitability of REMS pressing tools for pressfitting systems: Date 15.10.2018. For the updated situation regarding suitability status check our website:  
www.rems.de → Downloads → Product catalogues, brochures → REMS Catalogue.

Pressing tongs/pressing rings for additional pressfitting systems on request.



System	Pressing contour	Art.-No.
PLUMBING PLUS EZIPRESS Water (AUS)	VAU 15 (OD 12,7 mm)	572687
	VAU 20 (OD 19,1 mm)	572689
	VAU 25 (OD 25,4 mm)	572691
	VAU 32 (OD 31,8 mm)	572693
	VAU 40 (OD 38,1 mm)	572695
	VAU 50 (OD 50,8 mm)	572697
	VAUFz 65 (PR-3B) <sup>3)</sup> (OD 63,5 mm)	572839 R
	VAUFz 80 (PR-3B) <sup>3)</sup> (OD 76,2 mm)	572840 R
	VAUFz 100 (PR-3B) <sup>3)</sup> (OD 101,6 mm)	572841 R
	VAU 15 45° (PR-2B) <sup>3)</sup>	574540 R
VAU 20 45° (PR-2B) <sup>3)</sup> (OD 19,1 mm)	574542 R	
VAU 25 45° (PR-2B) <sup>3)</sup> (OD 25,4 mm)	574544 R	
POLYPIPE POLYSURE	TH 10*	570467
	TH 15*	570457
	TH 22*	570472
	TH 28*	570477
POLYSAN Handelsges. m.b.H. & Co KG (Krems/Öster- reich)	M 15	570110
	M 18	570120
	M 22	570130
	M 28	570140
	M 35	570150
	M 42 (PR-3S) <sup>3)</sup>	572706 R
	M 54 (PR-3S) <sup>3)</sup>	572708 R
	M 76,1 XL (PR-3S) <sup>3) 7)</sup>	579101 R
	M 88,9 XL (PR-3S) <sup>3) 7)</sup>	579102 R
	M 108,0 XL (PR-3S) <sup>3) 7)</sup>	579103 R
	M 15 45° (PR-2B) <sup>3)</sup>	574522 R
M 18 45° (PR-2B) <sup>3)</sup>	574524 R	
M 22 45° (PR-2B) <sup>3)</sup>	574526 R	
M 28 45° (PR-2B) <sup>3)</sup>	574528 R	
M 35 45° (PR-2B) <sup>3)</sup>	574530 R	
POLYSAN Handelsges. m.b.H. & Co KG (Krems/Öster- reich)	V 15	570115
	V 18	570125
	V 22	570135
	V 28	570145
	V 35	570155
	V 42	570165
	V 54	570175
	V 15 45° (PR-2B) <sup>3)</sup>	574504 R
V 18 45° (PR-2B) <sup>3)</sup>	574506 R	
V 22 45° (PR-2B) <sup>3)</sup>	574508 R	
V 28 45° (PR-2B) <sup>3)</sup>	574510 R	
V 35 45° (PR-2B) <sup>3)</sup>	574512 R	
POLYSAN Handelsges. m.b.H. & Co KG (Krems/Öster- reich)	M 15	570110
	M 18	570120
	M 22	570130
	M 28	570140
	M 35	570150
	M 42 (PR-3S) <sup>3)</sup>	572706 R
	M 54 (PR-3S) <sup>3)</sup>	572708 R
	M 15 45° (PR-2B) <sup>3)</sup>	574522 R
	M 18 45° (PR-2B) <sup>3)</sup>	574524 R
	M 22 45° (PR-2B) <sup>3)</sup>	574526 R
	M 28 45° (PR-2B) <sup>3)</sup>	574528 R
	M 35 45° (PR-2B) <sup>3)</sup>	574530 R
POLYSAN Handelsges. m.b.H. & Co KG (Krems/Öster- reich)	M 15	570110
	M 18	570120
	M 22	570130
	M 28	570140
	M 35	570150
	M 42 (PR-3S) <sup>3)</sup>	572706 R
	M 54 (PR-3S) <sup>3)</sup>	572708 R
	M 76,1 XL (PR-3S) <sup>3) 7)</sup>	579101 R
	M 88,9 XL (PR-3S) <sup>3) 7)</sup>	579102 R
	M 108,0 XL (PR-3S) <sup>3) 7)</sup>	579103 R
POLYSAN- Edelstahl Press-System Gas	M 15 45° (PR-2B) <sup>3)</sup>	574522 R
	M 18 45° (PR-2B) <sup>3)</sup>	574524 R
	M 22 45° (PR-2B) <sup>3)</sup>	574526 R
	M 28 45° (PR-2B) <sup>3)</sup>	574528 R
	M 35 45° (PR-2B) <sup>3)</sup>	574530 R
	M 15	570110
	M 18	570120
	M 22	570130
	M 28	570140
	M 35	570150
POLYSAN- Edelstahl Press-System Wasser	M 42 (PR-3S) <sup>3)</sup>	572706 R
	M 54 (PR-3S) <sup>3)</sup>	572708 R
	M 76,1 XL (PR-3S) <sup>3) 7)</sup>	579101 R
	M 88,9 XL (PR-3S) <sup>3) 7)</sup>	579102 R
	M 108,0 XL (PR-3S) <sup>3) 7)</sup>	579103 R
	M 15 45° (PR-2B) <sup>3)</sup>	574522 R
	M 18 45° (PR-2B) <sup>3)</sup>	574524 R
	M 22 45° (PR-2B) <sup>3)</sup>	574526 R
	M 28 45° (PR-2B) <sup>3)</sup>	574528 R
	M 35 45° (PR-2B) <sup>3)</sup>	574530 R

System	Pressing contour	Art.-No.
POLYSAN	TH 14*	570455
Handelsges.	TH 16*	570460
m.b.H. & Co KG	TH 17*	570462
(Krems/Öster- reich)	TH 18*	570465
	TH 20*	570470
POLYSAN- Press-System	TH 26*	570475
	TH 32	570480
	TH 40	570485
	TH 50 (S)	572400
	TH 63 (S)	572405
	THz 75 (PR-3B) <sup>3)</sup>	572829 R
POLYSAN	TH 14*	570455
Handelsges.	TH 16*	570460
m.b.H. & Co KG	TH 17*	570462
(Krems/Öster- reich)	TH 18*	570465
	TH 20*	570470
POLYSAN-Henco- Press-System	TH 26*	570475
	HE 32	571900
	HEz 40	571904
POLYSAN	U 16*	570765
(España)	U 18*	570770
Rainbow	U 20*	570775
	U 25*	570780
	U 32	570785
	U 40	570790
	U 50	570795
	U 63 (PR-3B) <sup>3)</sup>	572837 R
	U 63 (S)	572365
Prandelli	H 14*	570310
Multyrama Pf	H 16*	570320
	H 18*	570340
	H 20*	570350
	H 26*	570370
	H 32	570380
	H 40	570790
	H 50	570795
	U 63 (PR-3B) <sup>3)</sup>	572837 R
Prandelli	H 16*	570320
Multyrama Pfm	H 18*	570340
	H 20*	570350
	H 26*	570370
	H 32	570380
	TH 16*	570460
	TH 18*	570465
	TH 20*	570470
	TH 26*	570475
	TH 32	570480
	TH 40	570485
	TH 50 (S)	572400
	U 16*	570765
	U 18*	570770
	U 20*	570775
	U 25*	570780
	U 32	570785
	U 40	570790
	U 50	570795
	U 63 (S)	572365
	U 63 (PR-3B) <sup>3)</sup>	572837 R
	U 75 (PR-3B) <sup>3)</sup>	572828 R
R		
Raccorderie	M 15	570110
Metallische	M 18	570120
aesPRES <sup>1)</sup>	M 22	570130
	M 28	570140
	M 35	570150
	M 42 (PR-3S) <sup>3)</sup>	572706 R
	M 54 (PR-3S) <sup>3)</sup>	572708 R
Raccorderie	M 15	570110
Metallische	M 18	570120
inoxPRES <sup>1)</sup>	M 22	570130
	M 28	570140
	M 35	570150
	M 42 (PR-3S) <sup>3)</sup>	572706 R
	M 54 (PR-3S) <sup>3)</sup>	572708 R

System	Pressing contour	Art.-No.
Raccorderie	M 15	570110
Metallische	M 18	570120
steelPRES <sup>1)</sup>	M 22	570130
	M 28	570140
	M 35	570150
	M 42 (PR-3S) <sup>3)</sup>	572706 R
	M 54 (PR-3S) <sup>3)</sup>	572708 R
RBM Tita-gas	TH 16*	570460
	TH 20*	570470
	TH 26*	570475
	TH 32	570480
RBM Tita-fix	B 14*	570845
	B 16*	570850
	B 18*	570855
	B 20*	570860
	B 26	570870
	F 16*	570717
	F 18*	570720
	F 20*	570727
	F 16 45° (PR-2B) <sup>3)</sup>	574550 R
	F 20 45° (PR-2B) <sup>3)</sup>	574552 R
	H 14*	570310
	H 16*	570320
	H 18*	570340
	H 20*	570350
	H 26*	570370
	H 32	570380
	TH 14*	570455
	TH 16*	570460
	TH 18*	570465
	TH 20*	570470
	TH 26*	570475
	TH 32	570480
	TH 40	570485
	TH 50 (S)	572400
	TH 63 (S)	572405
	U 14*	570760
	U 16*	570765
	U 18*	570770
	U 20*	570775
Redi Nicoll Fluxo	TH 14*	570455
	TH 16*	570460
	TH 18*	570465
	TH 20*	570470
	TH 26*	570475
	TH 32	570480
	TH 40	570485
	TH 50 (S)	572400
	TH 63 (S)	572405
	THz 75 (PR-3B) <sup>3)</sup>	572829 R
Redi Nicoll Fluxo Gas	TH 16*	570460
	TH 20*	570470
	TH 26*	570475
RIFENG U	U 14*	570760
PRESS FITTING (F5)	U 16*	570765
	U 18*	570770
	U 20*	570775
	U 25*	570780
	U 32	570785
	U 40	570790
	U 50	570795
	U 63 (S)	572365
	U 63 (PR-3B) <sup>3)</sup>	572837 R
	U 75 (PR-3B) <sup>3)</sup>	572828 R
RIFENG TH	TH 16*	570460
PRESS FITTING (F9)	TH 20*	570470
	TH 25*	570495
	TH 26*	570475
	TH 32	570480
	TH 40	570485
	TH 50 (S)	572400
	TH 63 (S)	572405

Pressfitting systems for gas installations must only be pressed with pressing tongs/pressing rings which are highlighted in yellow.  
Observe the national regulations.

\* These pressing tongs also fit the manual radial press REMS Eco-Press. Observe the national regulations.

<sup>1)</sup> Only pressing tongs from designation "108" (1<sup>st</sup> quarter of 2008), "208" (2<sup>nd</sup> quarter of 2008) etc. can be used. The designation is stamped on every pressing jaw.

<sup>2)</sup> For this pressfitting system producing a pressing joint with manual radial presses is not permitted.

<sup>3)</sup> Adapter tongs are required for driving pressing rings (PR), see page 176.

<sup>4)</sup> Press fittings made of red bronze (ProPress XL) must be pressed with pressing rings with press contour VUSR, copper fittings (ProPress XL-C) and stainless steel fittings (ProPress XL-S) with pressing rings with press contour VUSF.

<sup>5)</sup> For taking suitable pressing inserts.

<sup>6)</sup> Press fittings made of red bronze (Sanpress XL) must be pressed with pressing rings with press contour VR, copper fittings (Profipress XL, Profipress G XL), carbon steel (Prestabo XL) and stainless steel fittings (Sanpress Inox XL, Sanpress Inox G XL) with pressing rings with press contour VF.

<sup>7)</sup> Driven by REMS Power-Press XL.

The suitability of REMS pressing tools for pressfitting systems: Date 15.10.2018. For the updated situation regarding suitability status check our website: [www.rems.de](http://www.rems.de) → Downloads → Product catalogues, brochures → REMS Catalogue.

Pressing tongs/pressing rings for additional pressfitting systems on request.

# REMS pressing tongs

# REMS pressing rings

Accessories for REMS radial presses (except for REMS Mini-Press) and suitable radial presses of other makes

System	Pressing contour	Art.-No.
RIGUIER	RFz 12*	571320
A SERTIR	RFz 16*	571325
	RFz 20*	571330
	RFz 25	571335
Roth PressCheck	RN 14*	572672
	RN 16	572670
	RN 17*	572674
	RN 20*	572676
	RN 25/26	572678
	RN 32	572680
	RN 40 (PR-3S) <sup>3)</sup>	572714 R
	RN 50 (PR-3S) <sup>3)</sup>	572716 R
	RNz 63 (PR-3B) <sup>3)</sup>	572836 R
Roth España - Global Plastic	TH 16*	570460
	TH 18*	570465
Rothapress	TH 20*	570470
	TH 25*	570495
	TH 32	570480
	TH 40	570485
	TH 50 (S)	572400
	TH 63 (S)	572405
Rubinetterie Bresciane	M 15	570110
	M 18	570120
Bonomi	M 22	570130
TURBO INOX	M 28	570140
	M 35	570150
	M 42 (PR-3S) <sup>3)</sup>	572706 R
	M 54 (PR-3S) <sup>3)</sup>	572708 R
	M 76,1 XL (PR-3S) <sup>3)7)</sup>	579101 R
	M 88,9 XL (PR-3S) <sup>3)7)</sup>	579102 R
	M 108,0 XL (PR-3S) <sup>3)7)</sup>	579103 R
	M 15 45° (PR-2B) <sup>3)</sup>	574522 R
	M 18 45° (PR-2B) <sup>3)</sup>	574524 R
	M 22 45° (PR-2B) <sup>3)</sup>	574526 R
	M 28 45° (PR-2B) <sup>3)</sup>	574528 R
	M 35 45° (PR-2B) <sup>3)</sup>	574530 R
Rubinetterie Bresciane	M 15	570110
	M 18	570120
Bonomi	M 22	570130
TURBO INOX GAS	M 28	570140
	M 35	570150
	M 42 (PR-3S) <sup>3)</sup>	572706 R
	M 54 (PR-3S) <sup>3)</sup>	572708 R
	M 15 45° (PR-2B) <sup>3)</sup>	574522 R
	M 18 45° (PR-2B) <sup>3)</sup>	574524 R
	M 22 45° (PR-2B) <sup>3)</sup>	574526 R
	M 28 45° (PR-2B) <sup>3)</sup>	574528 R
	M 35 45° (PR-2B) <sup>3)</sup>	574530 R
Rubinetterie Bresciane	M 15	570110
	M 18	570120
Bonomi	M 22	570130
TURBO STEEL	M 28	570140
	M 35	570150
	M 42 (PR-3S) <sup>3)</sup>	572706 R
	M 54 (PR-3S) <sup>3)</sup>	572708 R
	M 76,1 XL (PR-3S) <sup>3)7)</sup>	579101 R
	M 88,9 XL (PR-3S) <sup>3)7)</sup>	579102 R
	M 108,0 XL (PR-3S) <sup>3)7)</sup>	579103 R
	M 15 45° (PR-2B) <sup>3)</sup>	574522 R
	M 18 45° (PR-2B) <sup>3)</sup>	574524 R
	M 22 45° (PR-2B) <sup>3)</sup>	574526 R
	M 28 45° (PR-2B) <sup>3)</sup>	574528 R
	M 35 45° (PR-2B) <sup>3)</sup>	574530 R
Rubinetterie Bresciane	TH 14*	570455
	TH 16*	570460
Bonomi	TH 18*	570465
TURBO PRESS	TH 20*	570470
	TH 26*	570475
	TH 32	570480
	TH 40	570485
	TH 50 (S)	572400
	TH 63 (S)	572405
Rubinetterie Bresciane	TH 16*	570460
	TH 20*	570470
Bonomi	TH 26*	570475
TURBO PRESS GAS	TH 32	570480
<b>S</b>		
Sa.MI plastic	TH 14*	570455
	TH 16*	570460
	TH 18*	570465
	TH 20*	570470
	TH 26*	570475
	TH 32	570480
	TH 40	570485
	TH 50 (S)	572400
	TH 63 (S)	572405
Sa.MI plastic Multistrato Gas	TH 16*	570460
	TH 20*	570470
	TH 26*	570475
	TH 32	570480

System	Pressing contour	Art.-No.
SANHA 3fit-Press Pb-free Serie 25000	B 16*	570850
	B 20*	570860
	B 26	570870
	B 32	570880
	F 16*	570717
	F 20*	570727
	F 26*	570730
	F 32	570735
	Fz 40	570742
	Fz 50	570747
	F 63 (S)	572385
	F 16 45° (PR-2B) <sup>3)</sup>	574550 R
	F 20 45° (PR-2B) <sup>3)</sup>	574552 R
	F 26 45° (PR-2B) <sup>3)</sup>	574554 R
	F 32 45° (PR-2B) <sup>3)</sup>	574556 R
	H 16*	570320
	H 20*	570350
	H 26*	570370
	H 32	570380
	H 40 (4G)	570390
	TH 16*	570460
	TH 20*	570470
	TH 26*	570475
	TH 32	570480
	TH 40	570485
	TH 50 (S)	572400
	TH 63 (S)	572405
	U 16*	570765
	U 20*	570775
	C 26*	570750
	U 32	570785
	U 40	570790
	U 50	570795
	U 63 (PR-3B) <sup>3)</sup>	572837 R
	U 63 (S)	572365
SANHA 3fit-Press PPSU Serie 35000	B 16*	570850
	B 20*	570860
	B 26	570870
	B 32	570880
	F 16*	570717
	F 20*	570727
	F 26*	570730
	F 32	570735
	F 16 45° (PR-2B) <sup>3)</sup>	574550 R
	F 20 45° (PR-2B) <sup>3)</sup>	574552 R
	F 26 45° (PR-2B) <sup>3)</sup>	574554 R
	F 32 45° (PR-2B) <sup>3)</sup>	574556 R
	H 16*	570320
	H 20*	570350
	H 26*	570370
	H 32	570380
	TH 16*	570460
	TH 20*	570470
	TH 26*	570475
	TH 32	570480
	TH 40	570485
	TH 50 (S)	572400
	TH 63 (S)	572405
	U 16*	570765
	U 20*	570775
	C 26*	570750
	U 32	570785
SANHA-NiroSan Gas Presssystem Serie 17000	SA 15	570935
	SA 18	570940
	SA 22	570945
	SA 28	570950
	SA 35	570955
	M 15	570110
	M 18	570120
	M 22	570130
	M 28	570140
	M 35	570150
	M 42 (PR-3S) <sup>3)</sup>	572706 R
	M 54 (PR-3S) <sup>3)</sup>	572708 R
	M 76,1 XL (PR-3S) <sup>3)7)</sup>	579101 R
	M 88,9 XL (PR-3S) <sup>3)7)</sup>	579102 R
	M 108,0 XL (PR-3S) <sup>3)7)</sup>	579103 R
	M 15 45° (PR-2B) <sup>3)</sup>	574522 R
	M 18 45° (PR-2B) <sup>3)</sup>	574524 R
	M 22 45° (PR-2B) <sup>3)</sup>	574526 R
	M 28 45° (PR-2B) <sup>3)</sup>	574528 R
	M 35 45° (PR-2B) <sup>3)</sup>	574530 R
	V 15	570115
	V 18	570125
	V 22	570135
	V 28	570145
	V 35	570155
	V 42	570165
	V 54	570175
	V 15 45° (PR-2B) <sup>3)</sup>	574504 R
	V 18 45° (PR-2B) <sup>3)</sup>	574506 R
	V 22 45° (PR-2B) <sup>3)</sup>	574508 R
	V 28 45° (PR-2B) <sup>3)</sup>	574510 R
	V 35 45° (PR-2B) <sup>3)</sup>	574512 R

System	Pressing contour	Art.-No.
SANHA-NiroSan Industry Presssystem Serie 18000	SA 15	570935
	SA 18	570940
	SA 22	570945
	SA 28	570950
	SA 35	570955
	M 15	570110
	M 18	570120
	M 22	570130
	M 28	570140
	M 35	570150
	M 42 (PR-3S) <sup>3)</sup>	572706 R
	M 54 (PR-3S) <sup>3)</sup>	572708 R
	XP 64,0 XL (PR-3S) <sup>3)7)</sup>	579100 R
	M 76,1 XL (PR-3S) <sup>3)7)</sup>	579101 R
	M 88,9 XL (PR-3S) <sup>3)7)</sup>	579102 R
	M 108,0 XL (PR-3S) <sup>3)7)</sup>	579103 R
	M 15 45° (PR-2B) <sup>3)</sup>	574522 R
	M 18 45° (PR-2B) <sup>3)</sup>	574524 R
	M 22 45° (PR-2B) <sup>3)</sup>	574526 R
	M 28 45° (PR-2B) <sup>3)</sup>	574528 R
	M 35 45° (PR-2B) <sup>3)</sup>	574530 R
	V 15	570115
	V 18	570125
	V 22	570135
	V 28	570145
	V 35	570155
	V 42	570165
	V 54	570175
	V 15 45° (PR-2B) <sup>3)</sup>	574504 R
	V 18 45° (PR-2B) <sup>3)</sup>	574506 R
	V 22 45° (PR-2B) <sup>3)</sup>	574508 R
	V 28 45° (PR-2B) <sup>3)</sup>	574510 R
	V 35 45° (PR-2B) <sup>3)</sup>	574512 R
SANHA-NiroSan SF Presssystem Serie 19000 (silicone free)	SA 15	570935
	SA 18	570940
	SA 22	570945
	SA 28	570950
	SA 35	570955
	M 15	570110
	M 18	570120
	M 22	570130
	M 28	570140
	M 35	570150
	M 42 (PR-3S) <sup>3)</sup>	572706 R
	M 54 (PR-3S) <sup>3)</sup>	572708 R
	M 76,1 XL (PR-3S) <sup>3)7)</sup>	579101 R
	M 88,9 XL (PR-3S) <sup>3)7)</sup>	579102 R
	M 108,0 XL (PR-3S) <sup>3)7)</sup>	579103 R
	M 15 45° (PR-2B) <sup>3)</sup>	574522 R
	M 18 45° (PR-2B) <sup>3)</sup>	574524 R
	M 22 45° (PR-2B) <sup>3)</sup>	574526 R
	M 28 45° (PR-2B) <sup>3)</sup>	574528 R
	M 35 45° (PR-2B) <sup>3)</sup>	574530 R
	V 15	570115
	V 18	570125
	V 22	570135
	V 28	570145
	V 35	570155
	V 42	570165
	V 54	570175
	V 15 45° (PR-2B) <sup>3)</sup>	574504 R
	V 18 45° (PR-2B) <sup>3)</sup>	574506 R
	V 22 45° (PR-2B) <sup>3)</sup>	574508 R
	V 28 45° (PR-2B) <sup>3)</sup>	574510 R
	V 35 45° (PR-2B) <sup>3)</sup>	574512 R

# REMS pressing tongs REMS pressing rings

Accessories for REMS radial presses (except for REMS Mini-Press)  
and suitable radial presses of other makes

System	Pressing contour	Art.-No.	
SANHA NiroTherm Serie 91000	SA 15	570935	
	SA 18	570940	
	SA 22	570945	
	SA 28	570950	
	SA 35	570955	
	M 15	570110	
	M 18	570120	
	M 22	570130	
	M 28	570140	
	M 35	570150	
	M 42 (PR-3S) <sup>3)</sup>	572706 R	
	M 54 (PR-3S) <sup>3)</sup>	572708 R	
	M 76,1 XL (PR-3S) <sup>3)7)</sup>	579101 R	
	M 88,9 XL (PR-3S) <sup>3)7)</sup>	579102 R	
	M 108,0 XL (PR-3S) <sup>3)7)</sup>	579103 R	
	M 15 45° (PR-2B) <sup>3)</sup>	574522 R	
	M 18 45° (PR-2B) <sup>3)</sup>	574524 R	
	M 22 45° (PR-2B) <sup>3)</sup>	574526 R	
	M 28 45° (PR-2B) <sup>3)</sup>	574528 R	
	M 35 45° (PR-2B) <sup>3)</sup>	574530 R	
	V 15	570115	
	V 18	570125	
	V 22	570135	
	V 28	570145	
	V 35	570155	
	V 42	570165	
	V 54	570175	
	V 15 45° (PR-2B) <sup>3)</sup>	574504 R	
	V 18 45° (PR-2B) <sup>3)</sup>	574506 R	
	V 22 45° (PR-2B) <sup>3)</sup>	574508 R	
	V 28 45° (PR-2B) <sup>3)</sup>	574510 R	
	V 35 45° (PR-2B) <sup>3)</sup>	574512 R	
	SANHA NiroTherm Industry Serie 98000	SA 15	570935
		SA 18	570940
		SA 22	570945
		SA 28	570950
		SA 35	570955
M 15		570110	
M 18		570120	
M 22		570130	
M 28		570140	
M 35		570150	
M 42 (PR-3S) <sup>3)</sup>		572706 R	
M 54 (PR-3S) <sup>3)</sup>		572708 R	
M 76,1 XL (PR-3S) <sup>3)7)</sup>		579101 R	
M 88,9 XL (PR-3S) <sup>3)7)</sup>		579102 R	
M 108,0 XL (PR-3S) <sup>3)7)</sup>		579103 R	
M 15 45° (PR-2B) <sup>3)</sup>		574522 R	
M 18 45° (PR-2B) <sup>3)</sup>		574524 R	
M 22 45° (PR-2B) <sup>3)</sup>		574526 R	
M 28 45° (PR-2B) <sup>3)</sup>		574528 R	
M 35 45° (PR-2B) <sup>3)</sup>		574530 R	
V 15		570115	
V 18		570125	
V 22		570135	
V 28		570145	
V 35		570155	
V 42		570165	
V 54		570175	
V 15 45° (PR-2B) <sup>3)</sup>		574504 R	
V 18 45° (PR-2B) <sup>3)</sup>		574506 R	
V 22 45° (PR-2B) <sup>3)</sup>		574508 R	
V 28 45° (PR-2B) <sup>3)</sup>		574510 R	
V 35 45° (PR-2B) <sup>3)</sup>		574512 R	
SANHA-Press Chrom Serie 16000		SA 12	570930
		SA 15	570935
		SA 18	570940
		SA 22	570945
		SA 28	570950
	M 12	570100	
	M 15	570110	
	M 18	570120	
	M 22	570130	
	M 28	570140	
	M 12 45° (PR-2B) <sup>3)</sup>	574520 R	
	M 15 45° (PR-2B) <sup>3)</sup>	574522 R	
	M 18 45° (PR-2B) <sup>3)</sup>	574524 R	
	M 22 45° (PR-2B) <sup>3)</sup>	574526 R	
	M 28 45° (PR-2B) <sup>3)</sup>	574528 R	
	V 12	570107	
	V 15	570115	
	V 18	570125	
	V 22	570135	
	V 28	570145	
	V 12 45° (PR-2B) <sup>3)</sup>	574502 R	
	V 15 45° (PR-2B) <sup>3)</sup>	574504 R	
	V 18 45° (PR-2B) <sup>3)</sup>	574506 R	
	V 22 45° (PR-2B) <sup>3)</sup>	574508 R	
	V 28 45° (PR-2B) <sup>3)</sup>	574510 R	

System	Pressing contour	Art.-No.
SANHA-Press GAS Pressfittings Serie 10000/ Serie 11000	SA 12	570930
	SA 14	570932
	SA 15	570935
	SA 16	570937
	SA 18	570940
	SA 22	570945
	SA 28	570950
	SA 35	570955
	M 12	570100
	M 15	570110
	M 18	570120
	M 22	570130
	M 28	570140
	M 35	570150
	M 42 (PR-3S) <sup>3)</sup>	572706 R
	M 54 (PR-3S) <sup>3)</sup>	572708 R
	M 12 45° (PR-2B) <sup>3)</sup>	574520 R
	M 15 45° (PR-2B) <sup>3)</sup>	574522 R
	M 18 45° (PR-2B) <sup>3)</sup>	574524 R
	M 22 45° (PR-2B) <sup>3)</sup>	574526 R
	M 28 45° (PR-2B) <sup>3)</sup>	574528 R
	M 35 45° (PR-2B) <sup>3)</sup>	574530 R
	V 12	570107
	V 14	570112
	VG 14	570132
	V 15	570115
	V 16	570117
	VG 16	570137
	V 18	570125
	V 22	570135
	V 28	570145
	V 35	570155
	V 42	570165
	V 54	570175
	V 12 45° (PR-2B) <sup>3)</sup>	574502 R
	VG 14 45° (PR-2B) <sup>3)</sup>	574536 R
	V 15 45° (PR-2B) <sup>3)</sup>	574504 R
VG 16 45° (PR-2B) <sup>3)</sup>	574538 R	
V 18 45° (PR-2B) <sup>3)</sup>	574506 R	
V 22 45° (PR-2B) <sup>3)</sup>	574508 R	
V 28 45° (PR-2B) <sup>3)</sup>	574510 R	
V 35 45° (PR-2B) <sup>3)</sup>	574512 R	
SANHA-Press Pressfittings Serie 6000	SA 12	570930
	SA 14	570932
	SA 15	570935
	SA 16	570937
	SA 18	570940
	SA 22	570945
	SA 28	570950
	SA 35	570955
	M 12	570100
	M 15	570110
	M 18	570120
	M 22	570130
	M 28	570140
	M 35	570150
	M 42 (PR-3S) <sup>3)</sup>	572706 R
	M 54 (PR-3S) <sup>3)</sup>	572708 R
	XP 64,0 XL (PR-3S) <sup>3)7)</sup>	579100 R
	XP 66,7 XL (PR-3S) <sup>3)7)</sup>	579108 R
	M 66,7 XL (PR-3S) <sup>3)7)</sup>	579107 R
	M 76,1 XL (PR-3S) <sup>3)7)</sup>	579101 R
	M 88,9 XL (PR-3S) <sup>3)7)</sup>	579102 R
	M 108,0 XL (PR-3S) <sup>3)7)</sup>	579103 R
	M 12 45° (PR-2B) <sup>3)</sup>	574520 R
	M 15 45° (PR-2B) <sup>3)</sup>	574522 R
	M 18 45° (PR-2B) <sup>3)</sup>	574524 R
	M 22 45° (PR-2B) <sup>3)</sup>	574526 R
	M 28 45° (PR-2B) <sup>3)</sup>	574528 R
	M 35 45° (PR-2B) <sup>3)</sup>	574530 R
	V 12	570107
	V 14	570112
	VG 14	570132
	V 15	570115
	V 16	570117
	VG 16	570137
	V 18	570125
	V 22	570135
	V 28	570145
V 35	570155	
V 42	570165	
V 54	570175	
V 12 45° (PR-2B) <sup>3)</sup>	574502 R	
VG 14 45° (PR-2B) <sup>3)</sup>	574536 R	
V 15 45° (PR-2B) <sup>3)</sup>	574504 R	
VG 16 45° (PR-2B) <sup>3)</sup>	574538 R	
V 18 45° (PR-2B) <sup>3)</sup>	574506 R	
V 22 45° (PR-2B) <sup>3)</sup>	574508 R	
V 28 45° (PR-2B) <sup>3)</sup>	574510 R	
V 35 45° (PR-2B) <sup>3)</sup>	574512 R	

System	Pressing contour	Art.-No.
SANHA-Press SOLAR Pressfittings Serie 12000/ Serie 13000	SA 12	570930
	SA 15	570935
	SA 18	570940
	SA 22	570945
	SA 28	570950
	SA 35	570955
	M 12	570100
	M 15	570110
	M 18	570120
	M 22	570130
	M 28	570140
	M 35	570150
	M 42 (PR-3S) <sup>3)</sup>	572706 R
	M 54 (PR-3S) <sup>3)</sup>	572708 R
	XP 64,0 XL (PR-3S) <sup>3)7)</sup>	579100 R
	XP 66,7 XL (PR-3S) <sup>3)7)</sup>	579108 R
	M 66,7 XL (PR-3S) <sup>3)7)</sup>	579107 R
	M 76,1 XL (PR-3S) <sup>3)7)</sup>	579101 R
	M 88,9 XL (PR-3S) <sup>3)7)</sup>	579102 R
	M 108,0 XL (PR-3S) <sup>3)7)</sup>	579103 R
	M 12 45° (PR-2B) <sup>3)</sup>	574520 R
	M 15 45° (PR-2B) <sup>3)</sup>	574522 R
	M 18 45° (PR-2B) <sup>3)</sup>	574524 R
	M 22 45° (PR-2B) <sup>3)</sup>	574526 R
	M 28 45° (PR-2B) <sup>3)</sup>	574528 R
	M 35 45° (PR-2B) <sup>3)</sup>	574530 R
	V 12	570107
	V 15	570115
	V 18	570125
	V 22	570135
	V 28	570145
	V 35	570155
	V 42	570165
	V 54	570175
	V 12 45° (PR-2B) <sup>3)</sup>	574502 R
	V 15 45° (PR-2B) <sup>3)</sup>	574504 R
	V 18 45° (PR-2B) <sup>3)</sup>	574506 R
V 22 45° (PR-2B) <sup>3)</sup>	574508 R	
V 28 45° (PR-2B) <sup>3)</sup>	574510 R	
V 35 45° (PR-2B) <sup>3)</sup>	574512 R	
SANHA PURAPRESS Serie 8000	SA 12	570930
	SA 14	570932
	SA 15	570935
	SA 16	570937
	SA 18	570940
	SA 22	570945
	SA 28	570950
	SA 35	570955
	M 12	570100
	M 15 <sup>1)</sup>	570110
	M 18 <sup>1)</sup>	570120
	M 22 <sup>1)</sup>	570130
	M 28 <sup>1)</sup>	570140
	M 35 <sup>1)</sup>	570150
	M 42 (PR-3S) <sup>3)</sup>	572706 R
	M 54 (PR-3S) <sup>3)</sup>	572708 R
	XP 64,0 XL (PR-3S) <sup>3)7)</sup>	579100 R
	XP 66,7 XL (PR-3S) <sup>3)7)</sup>	579108 R
	M 66,7 XL (PR-3S) <sup>3)7)</sup>	579107 R
	M 76,1 XL (PR-3S) <sup>3)7)</sup>	579101 R
	M 88,9 XL (PR-3S) <sup>3)7)</sup>	579102 R
	M 108,0 XL (PR-3S) <sup>3)7)</sup>	579103 R
	M 12 45° (PR-2B) <sup>3)</sup>	574520 R
	M 15 45° (PR-2B) <sup>3)</sup>	574522 R
	M 18 45° (PR-2B) <sup>3)</sup>	574524 R
	M 22 45° (PR-2B) <sup>3)</sup>	574526 R
	M 28 45° (PR-2B) <sup>3)</sup>	574528 R
	M 35 45° (PR-2B) <sup>3)</sup>	574530 R
	V 12	570107
	V 14	570112
	VG 14	570132
	V 15	570115
	V 16	570117
	VG 16	570137
	V 18	570125
	V 22	570135
	V 28	570145
V 35	570155	
V 42	570165	
V 54	570175	
V 12 45° (PR-2B) <sup>3)</sup>	574502 R	
VG 14 45° (PR-2B) <sup>3)</sup>	574536 R	
V 15 45° (PR-2B) <sup>3)</sup>	574504 R	
VG 16 45° (PR-2B) <sup>3)</sup>	574538 R	
V 18 45° (PR-2B) <sup>3)</sup>	574506 R	
V 22 45° (PR-2B) <sup>3)</sup>	574508 R	
V 28 45° (PR-2B) <sup>3)</sup>	574510 R	
V 35 45° (PR-2B) <sup>3)</sup>	574512 R	

Pressfitting systems for gas installations must only be pressed with pressing tongs/pressing rings which are highlighted in yellow.

Observe the national regulations.

\* These pressing tongs also fit the manual radial press REMS Eco-Press. Observe the national regulations.

- 1) Only pressing tongs from designation "108" (1<sup>st</sup> quarter of 2008), "208" (2<sup>nd</sup> quarter of 2008) etc. can be used. The designation is stamped on every pressing jaw.
- 2) For this pressfitting system producing a pressing joint with manual radial presses is not permitted.
- 3) Adapter tongs are required for driving pressing rings (PR), see page 176.
- 4) Press fittings made of red bronze (ProPress XL) must be pressed with pressing rings with press contour VUSR, copper fittings (ProPress XL-C) and stainless steel fittings (ProPress XL-S) with pressing rings with press contour VUSF.
- 5) For taking suitable pressing inserts.
- 6) Press fittings made of red bronze (Sanpress XL) must be pressed with pressing rings with press contour VR, copper fittings (Profipress XL, Profipress G XL), carbon steel (Prestabo XL) and stainless steel fittings (Sanpress Inox XL, Sanpress Inox G XL) with pressing rings with press contour VF.
- 7) Driven by REMS Power-Press XL.

The suitability of REMS pressing tools for pressfitting systems: Date 15.10.2018. For the updated situation regarding suitability status check our website:

[www.rems.de](http://www.rems.de) → Downloads → Product catalogues, brochures → REMS Catalogue.

Pressing tongs/pressing rings for additional pressfitting systems on request.



System	Pressing contour	Art.-No.	
SANHA-Therm Serie 24000	SA 12	570930	
	SA 15	570935	
	SA 18	570940	
	SA 22	570945	
	SA 28	570950	
	SA 35	570955	
	M 12	570100	
	M 15	570110	
	M 18	570120	
	M 22	570130	
	M 28	570140	
	M 35	570150	
	M 42 (PR-3S) <sup>3)</sup>	572706 R	
	M 54 (PR-3S) <sup>3)</sup>	572708 R	
	XP 66,7 XL (PR-3S) <sup>3) 7)</sup>	579108 R	
	M 66,7 XL (PR-3S) <sup>3) 7)</sup>	579107 R	
	M 76,1 XL (PR-3S) <sup>3) 7)</sup>	579101 R	
	M 88,9 XL (PR-3S) <sup>3) 7)</sup>	579102 R	
	M 108,0 XL (PR-3S) <sup>3) 7)</sup>	579103 R	
	M 12 45° (PR-2B) <sup>3)</sup>	574520 R	
	M 15 45° (PR-2B) <sup>3)</sup>	574522 R	
	M 18 45° (PR-2B) <sup>3)</sup>	574524 R	
	M 22 45° (PR-2B) <sup>3)</sup>	574526 R	
	M 28 45° (PR-2B) <sup>3)</sup>	574528 R	
	M 35 45° (PR-2B) <sup>3)</sup>	574530 R	
	V 12	570107	
	V 15	570115	
	V 18	570125	
	V 22	570135	
	V 28	570145	
	V 35	570155	
	V 42	570165	
	V 54	570175	
	V 12 45° (PR-2B) <sup>3)</sup>	574502 R	
	V 15 45° (PR-2B) <sup>3)</sup>	574504 R	
	V 18 45° (PR-2B) <sup>3)</sup>	574506 R	
	V 22 45° (PR-2B) <sup>3)</sup>	574508 R	
	V 28 45° (PR-2B) <sup>3)</sup>	574510 R	
	V 35 45° (PR-2B) <sup>3)</sup>	574512 R	
	SANHA-Therm Industry Serie 28000	SA 12	570930
		SA 15	570935
		SA 18	570940
		SA 22	570945
SA 28		570950	
SA 35		570955	
M 12		570100	
M 15		570110	
M 18		570120	
M 22		570130	
M 28		570140	
M 35		570150	
M 42 (PR-3S) <sup>3)</sup>		572706 R	
M 54 (PR-3S) <sup>3)</sup>		572708 R	
XP 66,7 XL (PR-3S) <sup>3) 7)</sup>		579108 R	
M 66,7 XL (PR-3S) <sup>3) 7)</sup>		579107 R	
M 76,1 XL (PR-3S) <sup>3) 7)</sup>		579101 R	
M 88,9 XL (PR-3S) <sup>3) 7)</sup>		579102 R	
M 108,0 XL (PR-3S) <sup>3) 7)</sup>		579103 R	
M 12 45° (PR-2B) <sup>3)</sup>		574520 R	
M 15 45° (PR-2B) <sup>3)</sup>		574522 R	
M 18 45° (PR-2B) <sup>3)</sup>		574524 R	
M 22 45° (PR-2B) <sup>3)</sup>		574526 R	
M 28 45° (PR-2B) <sup>3)</sup>		574528 R	
M 35 45° (PR-2B) <sup>3)</sup>		574530 R	
V 12		570107	
V 15		570115	
V 18		570125	
V 22		570135	
V 28		570145	
V 35		570155	
V 42		570165	
V 54		570175	
V 12 45° (PR-2B) <sup>3)</sup>		574502 R	
V 15 45° (PR-2B) <sup>3)</sup>		574504 R	
V 18 45° (PR-2B) <sup>3)</sup>		574506 R	
V 22 45° (PR-2B) <sup>3)</sup>		574508 R	
V 28 45° (PR-2B) <sup>3)</sup>		574510 R	
V 35 45° (PR-2B) <sup>3)</sup>		574512 R	
SANPRO THPRESS		TH 16*	570460
		TH 20*	570470
		TH 26*	570475
		TH 32	570480
	SATEC SK ViTerm	TH 16*	570460
		TH 18*	570465
		TH 20*	570470
		TH 26*	570475
		TH 32	570480
		U 40	570790
		U 50	570795
		U 63 (S)	572365
	Schütz duo-flex tri-o-flex	TH 14*	570455
		TH 16*	570460
		TH 17*	570462
		TH 20*	570470
		TH 25*	570495

System	Pressing contour	Art.-No.		
Schwer Fittings AQUApress	M 12	570100		
	M 15	570110		
	M 18	570120		
	M 22	570130		
	M 28	570140		
	M 35	570150		
	M 42 (4G)	570160		
	M 54 (4G)	570170		
	M 12 45° (PR-2B) <sup>3)</sup>	574520 R		
	M 15 45° (PR-2B) <sup>3)</sup>	574522 R		
	M 18 45° (PR-2B) <sup>3)</sup>	574524 R		
	M 22 45° (PR-2B) <sup>3)</sup>	574526 R		
	M 28 45° (PR-2B) <sup>3)</sup>	574528 R		
	M 35 45° (PR-2B) <sup>3)</sup>	574530 R		
	Seppelfricke	V 12	570107	
	VSH SudoPress	V 15	570115	
	C-Stahl	V 18	570125	
	Visu-Control	V 22	570135	
		V 28	570145	
		V 35	570155	
V 42		570165		
V 54		570175		
V 12 45° (PR-2B) <sup>3)</sup>		574502 R		
V 15 45° (PR-2B) <sup>3)</sup>		574504 R		
V 18 45° (PR-2B) <sup>3)</sup>		574506 R		
V 22 45° (PR-2B) <sup>3)</sup>		574508 R		
V 28 45° (PR-2B) <sup>3)</sup>		574510 R		
V 35 45° (PR-2B) <sup>3)</sup>		574512 R		
Seppelfricke		V 12	570107	
VSH SudoPress		V 15	570115	
Edelstahl		V 18	570125	
Visu-Control		V 22	570135	
		V 28	570145	
		V 35	570155	
		V 42	570165	
		V 54	570175	
		V 12 45° (PR-2B) <sup>3)</sup>	574502 R	
	V 15 45° (PR-2B) <sup>3)</sup>	574504 R		
	V 18 45° (PR-2B) <sup>3)</sup>	574506 R		
	V 22 45° (PR-2B) <sup>3)</sup>	574508 R		
	V 28 45° (PR-2B) <sup>3)</sup>	574510 R		
	V 35 45° (PR-2B) <sup>3)</sup>	574512 R		
	Seppelfricke	V 12	570107	
	VSH SudoPress	V 15	570115	
	Kupfer Gas	V 18	570125	
	Visu-Control	V 22	570135	
		V 28	570145	
		V 35	570155	
		V 42	570165	
		V 54	570175	
		V 12 45° (PR-2B) <sup>3)</sup>	574502 R	
V 15 45° (PR-2B) <sup>3)</sup>		574504 R		
V 18 45° (PR-2B) <sup>3)</sup>		574506 R		
V 22 45° (PR-2B) <sup>3)</sup>		574508 R		
V 28 45° (PR-2B) <sup>3)</sup>		574510 R		
V 35 45° (PR-2B) <sup>3)</sup>		574512 R		
Seppelfricke		V 15	570115	
VSH SudoPress		V 18	570125	
Kupfer Solar		V 22	570135	
Visu-Control		V 15 45° (PR-2B) <sup>3)</sup>	574504 R	
		V 18 45° (PR-2B) <sup>3)</sup>	574506 R	
		V 22 45° (PR-2B) <sup>3)</sup>	574508 R	
		Seppelfricke	M 12	570100
		VSH XPress	M 15	570110
		C-Stahl	M 18 <sup>1)</sup>	570120
	M 22	570130		
	M 28 <sup>1)</sup>	570140		
	M 35	570150		
	M 42 (4G)	570160		
	M 54 (4G)	570170		
	M 42 (PR-3S) <sup>3)</sup>	572706 R		
	M 54 (PR-3S) <sup>3)</sup>	572708 R		
	M 76,1 XL (PR-3S) <sup>3) 7)</sup>	579101 R		
	M 88,9 XL (PR-3S) <sup>3) 7)</sup>	579102 R		
	M 108,0 XL (PR-3S) <sup>3) 7)</sup>	579103 R		
	M 12 45° (PR-2B) <sup>3)</sup>	574520 R		
	M 15 45° (PR-2B) <sup>3)</sup>	574522 R		
	M 18 45° (PR-2B) <sup>3)</sup>	574524 R		
	M 22 45° (PR-2B) <sup>3)</sup>	574526 R		
M 28 45° (PR-2B) <sup>3)</sup>	574528 R			
M 35 45° (PR-2B) <sup>3)</sup>	574530 R			

System	Pressing contour	Art.-No.		
Seppelfricke VSH XPress Edelstahl	M 15	570110		
	M 18 <sup>1)</sup>	570120		
	M 22	570130		
	M 28 <sup>1)</sup>	570140		
	M 35	570150		
	M 42 (4G)	570160		
	M 54 (4G)	570170		
	M 42 (PR-3S) <sup>3)</sup>	572706 R		
	M 54 (PR-3S) <sup>3)</sup>	572708 R		
	M 76,1 XL (PR-3S) <sup>3) 7)</sup>	579101 R		
	M 88,9 XL (PR-3S) <sup>3) 7)</sup>	579102 R		
	M 108,0 XL (PR-3S) <sup>3) 7)</sup>	579103 R		
	M 15 45° (PR-2B) <sup>3)</sup>	574522 R		
	M 18 45° (PR-2B) <sup>3)</sup>	574524 R		
	M 22 45° (PR-2B) <sup>3)</sup>	574526 R		
	M 28 45° (PR-2B) <sup>3)</sup>	574528 R		
	M 35 45° (PR-2B) <sup>3)</sup>	574530 R		
	Seppelfricke VSH XPress Edelstahl Gas	M 15	570110	
		M 18 <sup>1)</sup>	570120	
		M 22	570130	
M 28 <sup>1)</sup>		570140		
M 35		570150		
M 42 (PR-3S) <sup>3)</sup>		572706 R		
M 54 (PR-3S) <sup>3)</sup>		572708 R		
Seppelfricke		M 12	570100	
VSH XPress Kupfer		M 15	570110	
		M 18 <sup>1)</sup>	570120	
		M 22	570130	
		M 28 <sup>1)</sup>	570140	
		M 35	570150	
		M 42 (PR-3S) <sup>3)</sup>	572706 R	
		M 54 (PR-3S) <sup>3)</sup>	572708 R	
		Seppelfricke	M 15	570110
		VSH XPress Kupfer Gas	M 18 <sup>1)</sup>	570120
			M 22	570130
			M 28 <sup>1)</sup>	570140
			M 35	570150
	M 42 (PR-3S) <sup>3)</sup>		572706 R	
	M 54 (PR-3S) <sup>3)</sup>		572708 R	
	SESTA SESTA GAS		TH 14*	570455
	TH 16*		570460	
	TH 20*		570470	
	TH 26*		570475	
	TH 32		570480	
	SESTA Sistema		H 16*	570320
H 20*	570350			
multistrato	TH 14*		570455	
	TH 16*		570460	
	TH 18*		570465	
	TH 20*		570470	
	TH 26*		570475	
	TH 32		570480	
	TH 40		570485	
	TH 50 (S)	572400		
	TH 63 (S)	572405		
	U 16*	570765		
	U 20*	570775		
	SLOVARM PEX-THERM	U 16*	570765	
		U 20*	570775	
		H 26*	570370	
		U 32	570785	
		H 16*	570320	
		H 20*	570350	
		H 26*	570370	
		H 32	570380	
		SOMATHERM MULTIX	H 16*	570320
H 20*			570350	
H 26*			570370	
H 32			570380	
TH 16*			570460	
TH 20*			570470	
TH 26*			570475	
TH 32			570480	
U 16*			570765	
U 20*			570775	
U 32			570785	
SOMATHERM SomaPRESS			H 12*	570300
	H 16*		570320	
	H 20*		570350	
	H 25*		570360	
	RFz 12*		571320	
	RFz 16*		571325	
	RFz 20*		571330	
	RFz 25*		571335	
	U 16*		570765	
	U 20*	570775		
	U 25*	570780		

# REMS pressing tongs REMS pressing rings

Accessories for REMS radial presses (except for REMS Mini-Press)  
and suitable radial presses of other makes

System	Pressing contour	Art.-No.
STANDARD	U 16*	570765
HIDRAULICA	U 18*	570770
MultiStandard	U 20*	570775
	U 25*	570780
	U 32	570785
	U 40	570790
	U 50	570795
	U 63 (PR-3B) <sup>3)</sup>	572837 R
	U 63 (S)	572365
STELBI	H 16*	570320
Polikraft	H 20*	570350
	H 26*	570370
	TH 16*	570460
	TH 20*	570470
	TH 26*	570475
	TH 32	570480
	TH 40	570485
	TH 50 (S)	572400
	TH 63 (S)	572405
	U 16*	570765
	U 20*	570775
STELBI	TH 16*	570460
Stelgas	TH 20*	570470
	TH 26*	570475
STPC STPEX	TH 16*	570460
	TH 20*	570470
	TH 26*	570475
System Ewoprex	H 16*	570320
	H 20*	570350
	H 26*	570370
	H 32	570380
	TH 16*	570460
	TH 20*	570470
	TH 26*	570475
	TH 32	570480
	U 16*	570765
	U 20*	570775
	U 32	570785
System WELCO-Gas	H 16 A*	570620
	H 20 A*	570650
	H 26 A*	570670
	H 32 A	570680
System WOPREX	H 14 A*	570610
	H 16 A*	570620
	H 17 A*	570630
	H 20 A*	570650
	H 26 A*	570670
	H 32 A	570680
	H 40 A (4G)	570695
<b>T</b>		
TDM BRASS Serie 1600	H 16*	570320
	H 18*	570340
	H 20*	570350
	H 25*	570360
	H 26*	570370
	H 32	570380
	TH 16*	570460
	TH 18*	570465
	TH 20*	570470
	TH 25*	570495
	TH 26*	570475
	THL 32	570487
	TH 40	570485
	TH 50 (S)	572400
	TH 63 (S)	572405
	U 16*	570765
	U 18*	570770
	U 20*	570775
	U 25*	570780
	C 26*	570750
	U 32	570785
TDM BRASS Serie 1700 gas	TH 16*	570460
	TH 20*	570470
	TH 26*	570475
	THL 32	570487
TermoConcept TC-PRESS	Basic E01 <sup>5)</sup>	571855

System	Pressing contour	Art.-No.
THERMOLUTZ	H 14*	570310
	H 16*	570320
	TH 20*	570470
TE-SA	TH 14*	570455
TE-SA press serie 800	TH 16*	570460
	TH 18*	570465
	TH 20*	570470
	TH 26*	570475
	TH 32	570480
	TH 40	570485
	TH 50 (S)	572400
	TH 63 (S)	572405
TIEMME	TH 14*	570455
AL-COBRAPEX Serie 1650	TH 16*	570460
	TH 18*	570465
	TH 20*	570470
	TH 25*	570495
	TH 26*	570475
	THL 32	570487
	TH 40	570485
	TH 50 (S)	572400
	TH 63 (S)	572405
	THz 75 (PR-3B) <sup>3)</sup>	572829 R
TIEMME Serie 1700 PE-X a pressare	RFz 12*	571320
	RFz 16*	571325
	RFz 20*	571330
	RFz 25	571335
	RFz 32	571340
TIEMME	TH 16*	570460
TIEMME Gas	TH 20*	570470
	TH 26*	570475
	THL 32	570487
TIGRE	TH 16*	570460
ALPEX GAS	TH 20*	570470
	TH 26*	570475
	TH 32	570480
TKM Systemtechnik	TH 14*	570455
	TH 16*	570460
	TH 20*	570470
	TH 26*	570475
	TH 32	570480
	TH 40	570485
	TH 50 (S)	572400
	TH 63 (S)	572405
TRA	U 16*	570765
MULTITRAPRESS	U 18*	570770
	U 20*	570775
	U 25*	570780
	U 32	570785
	U 40	570790
	U 50	570795
	U 63 (PR-3B) <sup>3)</sup>	572837 R
	U 63 (S)	572365
TRA TRAPRESS	H 12*	570300
	H 16*	570320
	H 20*	570350
	H 25*	570360
	H 32	570380
	RFz 12*	571320
	RFz 16*	571325
	RFz 20*	571330
	RFz 25	571335
	RFz 32	571340
TWEETOP	U 16*	570765
	U 20*	570775
	U 25*	570780
	U 32	570785
	U 40	570790
	U 50	570795
	U 63 (PR-3B) <sup>3)</sup>	572837 R
	U 63 (S)	572365
	U 75 (PR-3B) <sup>3)</sup>	572828 R
<b>U</b>		
UNICAL AG	U 16*	570765
MAX-MULTIPEX	U 20*	570775
	H 26*	570370
	C 26*	570750
	U 32	570785

System	Pressing contour	Art.-No.
UNIDELTA	TH 16*	570460
DeltAll	TH 20*	570470
	TH 26*	570475
	TH 32	570480
	TH 40	570485
	TH 50 (S)	572400
	TH 63 (S)	572405
	H 16*	570320
	H 20*	570350
	H 26*	570370
	H 32	570380
	H 40 (4G)	570390
	U 16*	570765
	U 20*	570775
	U 32	570785
	U 40	570790
	U 50	570795
	U 63 (S)	572365
UNIDELTA DeltAll GAS	TH 16*	570460
	TH 20*	570470
	TH 26*	570475
	TH 32	570480
	H 16*	570320
	H 20*	570350
	H 26*	570370
	H 32	570380
	U 16*	570765
	U 20*	570775
	U 32	570785
Uponor MLC	UP 14*	572630
	UP 16*	572632
	UP 18*	572634
	UP 20*	572636
	UP 25	572638
	UP 32	572640
	U 40	570790
	U 50	570795
	U 63 (PR-3B) <sup>3)</sup>	572837 R
	U 63 (S)	572365
	U 75 (PR-3B) <sup>3)</sup>	572828 R
Uponor MLC-D	UP 16*	572632
	UP 20*	572636
	UP 25	572638
	UP 32	572640
	U 50	570795
	U 63 (PR-3B) <sup>3)</sup>	572837 R
	U 63 (S)	572365
	U 75 (PR-3B) <sup>3)</sup>	572828 R
Uponor MLC-G <sup>2)</sup>	UP 20 <sup>2)</sup>	572636
	UP 25	572638
	UP 32	572640
Uponor Uni Pipe PLUS	UP 16*	572632
	UP 20*	572636
	UP 25	572638
	UP 32	572640
<b>V</b>		
Valsir Bravopress	B 16*	570850
	B 20*	570860
	B 26	570870
	B 32	570880
	F 16*	570717
	F 26*	570730
	F 16 45° (PR-2B) <sup>3)</sup>	574550 R
	F 20 45° (PR-2B) <sup>3)</sup>	574552 R
	F 26 45° (PR-2B) <sup>3)</sup>	574554 R
	H 16*	570320
	H 20*	570350
	H 26*	570370
	H 32	570380
	H 32 V	570685
	TH 16*	570460
	TH 20*	570470
	TH 26*	570475
	TH 32	570480
	U 16*	570765
	U 20*	570775
	C 26*	570750
	U 32	570785

Pressfitting systems for gas installations must only be pressed with pressing tongs/pressing rings which are highlighted in yellow. Observe the national regulations.

\* These pressing tongs also fit the manual radial press REMS Eco-Press. Observe the national regulations.

- Only pressing tongs from designation "108" (1<sup>st</sup> quarter of 2008), "208" (2<sup>nd</sup> quarter of 2008) etc. can be used. The designation is stamped on every pressing jaw.
- For this pressfitting system producing a pressing joint with manual radial presses is not permitted.
- Adapter tongs are required for driving pressing rings (PR), see page 176.
- Press fittings made of red bronze (ProPress XL) must be pressed with pressing rings with press contour VUSR, copper fittings (ProPress XL-C) and stainless steel fittings (ProPress XL-S) with pressing rings with press contour VUSF.
- For taking suitable pressing inserts.
- Press fittings made of red bronze (Sanpress XL) must be pressed with pressing rings with press contour VR, copper fittings (Profipress XL, Profipress G XL), carbon steel (Prestabo XL) and stainless steel fittings (Sanpress Inox XL, Sanpress Inox G XL) with pressing rings with press contour VF.
- Driven by REMS Power-Press XL.

The suitability of REMS pressing tools for pressfitting systems: Date 15.10.2018. For the updated situation regarding suitability status check our website: [www.rems.de](http://www.rems.de) → Downloads → Product catalogues, brochures → REMS Catalogue.

Pressing tongs/pressing rings for additional pressfitting systems on request.

System	Pressing contour	Art.-No.	
Valsir PEXAL	H 14*	570310	
	H 16*	570320	
	H 20*	570350	
	H 26*	570370	
	H 32	570380	
	H 32 V	570685	
	TH 16*	570460	
	TH 20*	570470	
	TH 26*	570475	
	TH 32	570480	
	TH 40	570485	
	TH 50 (S)	572400	
	TH 63 (S)	572405	
	U 16*	570765	
	U 20*	570775	
	C 26*	570750	
	U 32	570785	
	U 40	570790	
	U 50	570795	
	U 63 (PR-3B) <sup>3)</sup>	572837 R	
	U 63 (S)	572365	
	U 75 (PR-3B) <sup>3)</sup>	572828 R	
	Van Marcke Log. Tubipex	TH 16*	570460
		TH 17*	570462
		TH 20*	570470
		TH 26*	570475
		TH 32	570480
TH 40		570485	
TH 50 (S)		572400	
TH 63 (S)		572405	
THz 75 (PR-3B) <sup>3)</sup>		572829 R	
Van Marcke Log. Tubipress		M 12	570100
	M 15	570110	
	M 18	570120	
	M 22	570130	
	M 28	570140	
	M 35	570150	
	M 42 (4G)	570160	
	M 54 (4G)	570170	
	M 42 (PR-3S) <sup>3)</sup>	572706 R	
	M 54 (PR-3S) <sup>3)</sup>	572708 R	
	M 76,1 XL (PR-3S) <sup>3) 7)</sup>	579101 R	
	M 88,9 XL (PR-3S) <sup>3) 7)</sup>	579102 R	
	M 12 45° (PR-2B) <sup>3)</sup>	574520 R	
	M 15 45° (PR-2B) <sup>3)</sup>	574522 R	
	M 18 45° (PR-2B) <sup>3)</sup>	574524 R	
M 22 45° (PR-2B) <sup>3)</sup>	574526 R		
M 28 45° (PR-2B) <sup>3)</sup>	574528 R		
M 35 45° (PR-2B) <sup>3)</sup>	574530 R		
Variotherm System TH	TH 11,6*	570482	
	TH 16*	570460	
	TH 20*	570470	
Viega Fonterra	VX 12*	571630	
	VP 14/15*	570905	
	VP 16/17*	570910	
	VP 20*	570915	
	VP 25	570920	
Viega MegaPress	VMP ¾" (OD 17,2 mm)	571740	
	VMP ½" (OD 21,3 mm)	571762	
	VMPz ¾" (OD 26,9 mm)	571764	
	VMPz 1" (OD 33,7 mm)	571767	
	VMPz 1¼" (S) (OD 42,4 mm)	572413	
	VMPz 1½" (PR-3B) <sup>3)</sup> (OD 48,3 mm)	572844 R	
	VMPz 2" (PR-3B) <sup>3)</sup> (OD 60,3 mm)	572845 R	
Viega Pexfit	VX 16*	571635	
	VX 20*	571640	
	VX 25*	571645	
Viega Pexfit G	VX 16*	571635	
	VX 20*	571640	
	VX 25*	571645	
Viega Prestabo	V 12	570107	
	V 15	570115	
	V 18	570125	
	V 22	570135	
	V 28	570145	
	V 35	570155	
	V 42	570165	
	V 54	570175	
	VFz 64,0 (PR-3B) <sup>3) 6)</sup>	572815 R	
	VFz 76,1 (PR-3B) <sup>3) 6)</sup>	572816 R	
	VFz 88,9 (PR-3B) <sup>3) 6)</sup>	572817 R	
	VFz 108,0 (PR-3B) <sup>3) 6)</sup>	572818 R	
	V 12 45° (PR-2B) <sup>3)</sup>	574502 R	
	V 15 45° (PR-2B) <sup>3)</sup>	574504 R	
	V 18 45° (PR-2B) <sup>3)</sup>	574506 R	
	V 22 45° (PR-2B) <sup>3)</sup>	574508 R	
	V 28 45° (PR-2B) <sup>3)</sup>	574510 R	
	V 35 45° (PR-2B) <sup>3)</sup>	574512 R	

System	Pressing contour	Art.-No.	
Viega Profipress	V 12	570107	
	VG 14	570132	
	V 15	570115	
	VG 16	570137	
	V 18	570125	
	V 22	570135	
	V 28	570145	
	V 35	570155	
	V 42	570165	
	V 54	570175	
	VFz 64,0 (PR-3B) <sup>3) 6)</sup>	572815 R	
	VFz 76,1 (PR-3B) <sup>3) 6)</sup>	572816 R	
	VFz 88,9 (PR-3B) <sup>3) 6)</sup>	572817 R	
	VFz 108,0 (PR-3B) <sup>3) 6)</sup>	572818 R	
	V 12 45° (PR-2B) <sup>3)</sup>	574502 R	
	VG 14 45° (PR-2B) <sup>3)</sup>	574536 R	
	V 15 45° (PR-2B) <sup>3)</sup>	574504 R	
	VG 16 45° (PR-2B) <sup>3)</sup>	574538 R	
	V 18 45° (PR-2B) <sup>3)</sup>	574506 R	
	V 22 45° (PR-2B) <sup>3)</sup>	574508 R	
	V 28 45° (PR-2B) <sup>3)</sup>	574510 R	
	V 35 45° (PR-2B) <sup>3)</sup>	574512 R	
	Viega Profipress G	V 12	570107
		V 15	570115
		V 18	570125
		V 22	570135
		V 28	570145
V 35		570155	
V 42		570165	
V 54		570175	
VFz 64,0 (PR-3B) <sup>3) 6)</sup>		572815 R	
V 12 45° (PR-2B) <sup>3)</sup>		574502 R	
V 15 45° (PR-2B) <sup>3)</sup>		574504 R	
V 18 45° (PR-2B) <sup>3)</sup>		574506 R	
V 22 45° (PR-2B) <sup>3)</sup>		574508 R	
V 28 45° (PR-2B) <sup>3)</sup>		574510 R	
V 35 45° (PR-2B) <sup>3)</sup>		574512 R	
Viega Profipress S	V 12	570107	
	V 15	570115	
	V 18	570125	
	V 22	570135	
	V 28	570145	
	V 35	570155	
	V 42	570165	
	V 54	570175	
	VFz 64,0 (PR-3B) <sup>3) 6)</sup>	572815 R	
	V 12 45° (PR-2B) <sup>3)</sup>	574502 R	
	V 15 45° (PR-2B) <sup>3)</sup>	574504 R	
	V 18 45° (PR-2B) <sup>3)</sup>	574506 R	
	V 22 45° (PR-2B) <sup>3)</sup>	574508 R	
	V 28 45° (PR-2B) <sup>3)</sup>	574510 R	
	V 35 45° (PR-2B) <sup>3)</sup>	574512 R	
Viega Profipress Therm	V 12	570107	
	V 15	570115	
	V 18	570125	
	V 22	570135	
	V 28	570145	
	V 35	570155	
	V 42	570165	
	V 54	570175	
	VFz 64,0 (PR-3B) <sup>3) 6)</sup>	572815 R	
	V 12 45° (PR-2B) <sup>3)</sup>	574502 R	
	V 15 45° (PR-2B) <sup>3)</sup>	574504 R	
	V 18 45° (PR-2B) <sup>3)</sup>	574506 R	
	V 22 45° (PR-2B) <sup>3)</sup>	574508 R	
	V 28 45° (PR-2B) <sup>3)</sup>	574510 R	
	V 35 45° (PR-2B) <sup>3)</sup>	574512 R	
Viega ProPress System USA	VUS ½" (OD 15,9 mm)	571770	
	VUS ¾" (OD 22,2 mm)	571775	
	VUS 1" (OD 28,6 mm)	571780	
	VUS 1½" (OD 34,9 mm)	571785	
	VUS 1½" (OD 41,3 mm)	571790	
	VUS 2" (OD 54,0 mm)	571795	
	XL-C/XL-S VUSFz 2½" (PR-3B) <sup>3) 6)</sup> (OD 66,7 mm)	572819 R	
	XL-C/XL-S VUSFz 3" (PR-3B) <sup>3) 6)</sup> (OD 79,4 mm)	572820 R	
	XL-C/XL-S VUSFz 4" (PR-3B) <sup>3) 6)</sup> (OD 104,8 mm)	572821 R	
	Viega Propress WATER System AUS	VAU 15 (OD 12,7 mm)	572687
		VAU 20 (OD 19,1 mm)	572689
		VAU 25 (OD 25,4 mm)	572691
		VAU 32 (OD 31,8 mm)	572693
		VAU 40 (OD 38,1 mm)	572695
	VAU 50 (OD 50,8 mm)	572697	
Viega PropressG GAS System AUS	VAU 15 (OD 12,7 mm)	572687	
	VAU 20 (OD 19,1 mm)	572689	
	VAU 25 (OD 25,4 mm)	572691	
	VAU 32 (OD 31,8 mm)	572693	
	VAU 40 (OD 38,1 mm)	572695	
VAU 50 (OD 50,8 mm)	572697		
Viega Raxinox	VRX 16	571750	
	VRX 20	571752	
	VRX 25	571754	
Viega Raxofix	VRX 16	571750	
	VRX 20	571752	
	VRX 25	571754	
	VRX 32	571756	
	VRX 40	571758	
	VRX 50	571760	
	VRX 63	571797	

System	Pressing contour	Art.-No.
Viega Sanfix <sup>2)</sup>	VP 16/17*	570910
	VP 20*	570915
	VP 25*	570920
	VP 32	570925
	Viega Sanpress	V 12
V 15		570115
V 18		570125
V 22		570135
V 28		570145
V 35		570155
V 42		570165
V 54		570175
VR 76,1 (PR-3B) <sup>3) 6)</sup>		572822 R
VR 88,9 (PR-3B) <sup>3) 6)</sup>		572823 R
VR 108,0 (PR-3B) <sup>3) 6)</sup>		572824 R
V 12 45° (PR-2B) <sup>3)</sup>		574502 R
V 15 45° (PR-2B) <sup>3)</sup>		574504 R
V 18 45° (PR-2B) <sup>3)</sup>		574506 R
V 22 45° (PR-2B) <sup>3)</sup>		574508 R
V 28 45° (PR-2B) <sup>3)</sup>	574510 R	
V 35 45° (PR-2B) <sup>3)</sup>	574512 R	
Viega Sanpress Inox	V 15	570115
	V 18	570125
	V 22	570135
	V 28	570145
	V 35	570155
	V 42	570165
	V 54	570175
	VFz 64,0 (PR-3B) <sup>3) 6)</sup>	572815 R
	VFz 76,1 (PR-3B) <sup>3) 6)</sup>	572816 R
	VFz 88,9 (PR-3B) <sup>3) 6)</sup>	572817 R
Viega Sanpress Inox G	V 15	570115
	V 18	570125
	V 22	570135
	V 28	570145
	V 35	570155
	V 42	570165
	V 54	570175
	VFz 64,0 (PR-3B) <sup>3) 6)</sup>	572815 R
	VFz 76,1 (PR-3B) <sup>3) 6)</sup>	572816 R
	VFz 88,9 (PR-3B) <sup>3) 6)</sup>	572817 R
	VFz 108,0 (PR-3B) <sup>3) 6)</sup>	572818 R
	V 15 45° (PR-2B) <sup>3)</sup>	574504 R
	V 18 45° (PR-2B) <sup>3)</sup>	574506 R
	V 22 45° (PR-2B) <sup>3)</sup>	574508 R
	V 28 45° (PR-2B) <sup>3)</sup>	574510 R
V 35 45° (PR-2B) <sup>3)</sup>	574512 R	
Viessmann	TH 14*	570455
	TH 16*	570460
	TH 20*	570470
	TH 26*	570475
	TH 32	570480
TH 40	570485	
VINSAR PEX-AL-PEX	TH 16*	570460
	TH 20*	570470
	TH 32	570480
Vogel & Noot EASYTEC	TH 16*	570460
	TH 20*	570470
	TH 26*	570475
VSH MultiPress	TH 32	570480
	TH 40	570485
	TH 50 (S)	572400
	TH 63 (S)	572405
	U 14*	570760
U 16*	570765	
U 20*	570775	
U 25*	570780	
U 32	570785	
U 40	570790	
TH 14*	570455	
TH 16*	570460	
TH 20*	570470	
TH 25*	570495	
TH 26*	570475	
TH 32	570480	
TH 40	570485	
TH 50 (S)	572400	
TH 63 (S)	572405	

# REMS pressing tongs REMS pressing rings

Accessories for REMS radial presses (except for REMS Mini-Press)  
and suitable radial presses of other makes

System	Pressing contour	Art.-No.
VSH	V 12	570107
SudoPress Carbon	V 15	570115
	V 18	570125
	V 22	570135
	V 28	570145
	V 35	570155
	V 42	570165
	V 54	570175
VSH	V 12	570107
SudoPress Copper	V 15	570115
	V 18	570125
	V 22	570135
	V 28	570145
	V 35	570155
	V 42	570165
	V 54	570175
VSH	V 12	570107
SudoPress Copper Gas	V 15	570115
	V 18	570125
	V 22	570135
	V 28	570145
	V 35	570155
	V 42	570165
	V 54	570175
VSH	V 15	570115
SudoPress Stainless	V 18	570125
	V 22	570135
	V 28	570145
	V 35	570155
	V 42	570165
	V 54	570175
VSH	M 12	570100
XPress Carbon	M 15	570110
	M 18 <sup>1)</sup>	570120
	M 22	570130
	M 28 <sup>1)</sup>	570140
	M 35	570150
	M 42 (4G)	570160
	M 54 (4G)	570170
	M 42 (PR-3S) <sup>3)</sup>	572706 R
	M 54 (PR-3S) <sup>3)</sup>	572708 R
	XP 66,7 XL (PR-3S) <sup>3) 7)</sup>	579108 R
	M 76,1 XL (PR-3S) <sup>3) 7)</sup>	579101 R
	M 88,9 XL (PR-3S) <sup>3) 7)</sup>	579102 R
	M 108,0 XL (PR-3S) <sup>3) 7)</sup>	579103 R
	M 12 45° (PR-2B) <sup>3)</sup>	574520 R
	M 15 45° (PR-2B) <sup>3)</sup>	574522 R
	M 18 45° (PR-2B) <sup>3)</sup>	574524 R
	M 22 45° (PR-2B) <sup>3)</sup>	574526 R
	M 28 45° (PR-2B) <sup>3)</sup>	574528 R
	M 35 45° (PR-2B) <sup>3)</sup>	574530 R
VSH	M 12	570100
XPress Copper	M 15	570110
	M 18 <sup>1)</sup>	570120
	M 22	570130
	M 28 <sup>1)</sup>	570140
	M 35	570150
	M 42 (PR-3S) <sup>3)</sup>	572706 R
	M 54 (PR-3S) <sup>3)</sup>	572708 R
	XP 64,0 XL (PR-3S) <sup>3) 7)</sup>	579100 R
	XP 66,7 XL (PR-3S) <sup>3) 7)</sup>	579108 R
	M 76,1 XL (PR-3S) <sup>3) 7)</sup>	579101 R
	M 88,9 XL (PR-3S) <sup>3) 7)</sup>	579102 R
	XP 108,0 XL (PR-3S) <sup>3) 7)</sup>	579109 R
	M 12 45° (PR-2B) <sup>3)</sup>	574520 R
	M 15 45° (PR-2B) <sup>3)</sup>	574522 R
	M 18 45° (PR-2B) <sup>3)</sup>	574524 R
	M 22 45° (PR-2B) <sup>3)</sup>	574526 R
	M 28 45° (PR-2B) <sup>3)</sup>	574528 R
	M 35 45° (PR-2B) <sup>3)</sup>	574530 R

System	Pressing contour	Art.-No.
VSH	M 15	570110
XPress Copper GAS	M 18 <sup>1)</sup>	570120
	M 22	570130
	M 28 <sup>1)</sup>	570140
	M 35	570150
	M 42 (PR-3S) <sup>3)</sup>	572706 R
	M 54 (PR-3S) <sup>3)</sup>	572708 R
VSH	M 15	570110
XPress Stainless	M 18 <sup>1)</sup>	570120
	M 22	570130
	M 28 <sup>1)</sup>	570140
	M 35	570150
	M 42 (4G)	570160
	M 54 (4G)	570170
	M 42 (PR-3S) <sup>3)</sup>	572706 R
	M 54 (PR-3S) <sup>3)</sup>	572708 R
	M 76,1 XL (PR-3S) <sup>3) 7)</sup>	579101 R
	M 88,9 XL (PR-3S) <sup>3) 7)</sup>	579102 R
	M 108,0 XL (PR-3S) <sup>3) 7)</sup>	579103 R
	M 15 45° (PR-2B) <sup>3)</sup>	574522 R
	M 18 45° (PR-2B) <sup>3)</sup>	574524 R
	M 22 45° (PR-2B) <sup>3)</sup>	574526 R
	M 28 45° (PR-2B) <sup>3)</sup>	574528 R
	M 35 45° (PR-2B) <sup>3)</sup>	574530 R
VSH	M 15	570110
XPress Stainless Gas	M 18 <sup>1)</sup>	570120
	M 22	570130
	M 28 <sup>1)</sup>	570140
	M 35	570150
	M 42 (PR-3S) <sup>3)</sup>	572706 R
	M 54 (PR-3S) <sup>3)</sup>	572708 R
<b>W</b>		
Meier Tobler	U 16*	570765
Metalplast - Stramax	U 18*	570770
	U 20*	570775
	U 25*	570780
	U 32	570785
	U 40	570790
	U 50	570795
	U 63 (PR-3B) <sup>3)</sup>	572837 R
	U 63 (S)	572365
	U 75 (PR-3B) <sup>3)</sup>	572828 R
Watts MTR	TH 16*	570460
Art. press	TH 20*	570470
	TH 26*	570475
	TH 32	570480
WATTS	US ¾**	571450
RADIANT	US ½**	571455
Watts WaterPEX	US ¾**	571460
	US 1**	571465
	US 1¼*	571470
	US 1½*	571475
WATTS	US ¾**	571450
RADIANT	US ½**	571455
Watts	US ¾**	571460
RadiantPEX	US 1**	571465
	US 1¼*	571470
	US 1½*	571475
WATTS	U 16 (¾*)	570765
RADIANT	U 20 (¾*)	570775
Watts	U 25 (¾*)	570780
RadiantPEX-AL	U 32 (1*)	570785
Wavin	U 14*	570760
Tigris K1/K5	U 16*	570765
	U 20*	570775
	U 25*	570780
	U 32	570785
	U 40	570790
	U 50	570795
	U 63 (PR-3B) <sup>3)</sup>	572837 R
	U 63 (S)	572365
	U 75 (PR-3B) <sup>3)</sup>	572828 R

System	Pressing contour	Art.-No.
Wavin	U 14*	570760
Tigris M1/M5	U 16*	570765
	U 20*	570775
	U 25*	570780
	U 32	570785
	U 40	570790
	U 50	570795
	U 63 (PR-3B) <sup>3)</sup>	572837 R
	U 63 (S)	572365
	U 75 (PR-3B) <sup>3)</sup>	572828 R
WeeConPress	M 12	570100
Alu	M 15	570110
	M 18	570120
	M 22	570130
	M 28	570140
	M 35	570150
	M 42 (4G)	570160
	M 54 (4G)	570170
	M 42 (PR-3S) <sup>3)</sup>	572706 R
	M 54 (PR-3S) <sup>3)</sup>	572708 R
	M 12 45° (PR-2B) <sup>3)</sup>	574520 R
	M 15 45° (PR-2B) <sup>3)</sup>	574522 R
	M 18 45° (PR-2B) <sup>3)</sup>	574524 R
	M 22 45° (PR-2B) <sup>3)</sup>	574526 R
	M 28 45° (PR-2B) <sup>3)</sup>	574528 R
	M 35 45° (PR-2B) <sup>3)</sup>	574530 R
	V 12	570107
	V 15	570115
	V 18	570125
	V 22	570135
	V 28	570145
	V 35	570155
	V 42	570165
	V 54	570175
	V 12 45° (PR-2B) <sup>3)</sup>	574502 R
	V 15 45° (PR-2B) <sup>3)</sup>	574504 R
	V 18 45° (PR-2B) <sup>3)</sup>	574506 R
	V 22 45° (PR-2B) <sup>3)</sup>	574508 R
	V 28 45° (PR-2B) <sup>3)</sup>	574510 R
	V 35 45° (PR-2B) <sup>3)</sup>	574512 R
	SA 12	570930
	SA 15	570935
	SA 18	570940
	SA 22	570945
	SA 28	570950
	SA 35	570955
	SA 42 (PR-3S) <sup>3)</sup>	572710 R
	SA 54 (PR-3S) <sup>3)</sup>	572712 R
WeeConPress	M 12	570100
C-Stahl	M 15	570110
	M 18	570120
	M 22	570130
	M 28	570140
	M 35	570150
	M 42 (4G)	570160
	M 54 (4G)	570170
	M 42 (PR-3S) <sup>3)</sup>	572706 R
	M 54 (PR-3S) <sup>3)</sup>	572708 R
	M 76,1 XL (PR-3S) <sup>3) 7)</sup>	579101 R
	M 88,9 XL (PR-3S) <sup>3) 7)</sup>	579102 R
	M 108,0 XL (PR-3S) <sup>3) 7)</sup>	579103 R
	M 12 45° (PR-2B) <sup>3)</sup>	574520 R
	M 15 45° (PR-2B) <sup>3)</sup>	574522 R
	M 18 45° (PR-2B) <sup>3)</sup>	574524 R
	M 22 45° (PR-2B) <sup>3)</sup>	574526 R
	M 28 45° (PR-2B) <sup>3)</sup>	574528 R
	M 35 45° (PR-2B) <sup>3)</sup>	574530 R

Pressfitting systems for gas installations must only be pressed with pressing tongs/pressing rings which are highlighted in yellow. Observe the national regulations.

\* These pressing tongs also fit the manual radial press REMS Eco-Press. Observe the national regulations.

- 1) Only pressing tongs from designation "108" (1<sup>st</sup> quarter of 2008), "208" (2<sup>nd</sup> quarter of 2008) etc. can be used. The designation is stamped on every pressing jaw.
- 2) For this pressfitting system producing a pressing joint with manual radial presses is not permitted.
- 3) Adapter tongs are required for driving pressing rings (PR), see page 176.
- 4) Press fittings made of red bronze (ProPress XL) must be pressed with pressing rings with press contour VUSR, copper fittings (ProPress XL-C) and stainless steel fittings (ProPress XL-S) with pressing rings with press contour VUSF.
- 5) For taking suitable pressing inserts.
- 6) Press fittings made of red bronze (Sanpress XL) must be pressed with pressing rings with press contour VR, copper fittings (Profipress XL, Profipress G XL), carbon steel (Prestabo XL) and stainless steel fittings (Sanpress Inox XL, Sanpress Inox G XL) with pressing rings with press contour VF.
- 7) Driven by REMS Power-Press XL.

The suitability of REMS pressing tools for pressfitting systems: Date 15.10.2018. For the updated situation regarding suitability status check our website: [www.rems.de](http://www.rems.de) → Downloads → Product catalogues, brochures → REMS Catalogue.

Pressing tongs/pressing rings for additional pressfitting systems on request.

# REMS pressing tongs REMS pressing rings

Accessories for REMS radial presses (except for REMS Mini-Press)  
and suitable radial presses of other makes

System	Pressing contour	Art.-No.
WeeConPress Inox	M 12	570100
	M 15	570110
	M 18	570120
	M 22	570130
	M 28	570140
	M 35	570150
	M 42 (4G)	570160
	M 54 (4G)	570170
	M 42 (PR-3S) <sup>3)</sup>	572706 R
	M 54 (PR-3S) <sup>3)</sup>	572708 R
	M 76,1 XL (PR-3S) <sup>3)7)</sup>	579101 R
	M 88,9 XL (PR-3S) <sup>3)7)</sup>	579102 R
	M 108,0 XL (PR-3S) <sup>3)7)</sup>	579103 R
	M 12 45° (PR-2B) <sup>3)</sup>	574520 R
	M 15 45° (PR-2B) <sup>3)</sup>	574522 R
	M 18 45° (PR-2B) <sup>3)</sup>	574524 R
	M 22 45° (PR-2B) <sup>3)</sup>	574526 R
	M 28 45° (PR-2B) <sup>3)</sup>	574528 R
	M 35 45° (PR-2B) <sup>3)</sup>	574530 R
	WeeConPress Kupfer	M 12
M 15		570110
M 18		570120
M 22		570130
M 28		570140
M 35		570150
M 42 (4G)		570160
M 54 (4G)		570170
M 42 (PR-3S) <sup>3)</sup>		572706 R
M 54 (PR-3S) <sup>3)</sup>		572708 R
M 76,1 XL (PR-3S) <sup>3)7)</sup>		579101 R
M 88,9 XL (PR-3S) <sup>3)7)</sup>		579102 R
M 108,0 XL (PR-3S) <sup>3)7)</sup>		579103 R
M 12 45° (PR-2B) <sup>3)</sup>		574520 R
M 15 45° (PR-2B) <sup>3)</sup>		574522 R
M 18 45° (PR-2B) <sup>3)</sup>		574524 R
M 22 45° (PR-2B) <sup>3)</sup>		574526 R
M 28 45° (PR-2B) <sup>3)</sup>		574528 R
M 35 45° (PR-2B) <sup>3)</sup>		574530 R
WeeConFlex MVR		H 16*
	H 20*	570350
	H 26*	570370
	H 32	570380
	U 40	570790
	U 50	570795
	U 63 (PR-3B) <sup>3)</sup>	572837 R
	U 63 (S)	572365
	TH 16*	570460
	TH 20*	570470
	TH 26*	570475
	TH 32	570480
	TH 40	570485
	TH 50 (S)	572400
	TH 63 (S)	572405
WEM	U 16*	570765

System	Pressing contour	Art.-No.
WIELAND cuprotherm CTX <sup>3)</sup>	TH 14 <sup>2)</sup>	570455
	TH 16 <sup>2)</sup>	570460
	TH 18 <sup>2)</sup>	570465
	TH 20 <sup>2)</sup>	570470
	TH 26 <sup>2)</sup>	570475
WKS-Press	TH 14*	570455
	TH 16*	570460
	TH 17*	570462
	TH 20*	570470
	TH 26*	570475
	TH 32	570480
	TH 40	570485
	WÜRTH Würth	TH 16*
	TH 20*	570470
	TH 26*	570475
	HE 32	571900
<b>X</b>		
XtraConnect	F 16*	570717
	F 20*	570727
	F 26*	570730
	F 32	570735
	F 16 45° (PR-2B) <sup>3)</sup>	574550 R
	F 20 45° (PR-2B) <sup>3)</sup>	574552 R
	F 26 45° (PR-2B) <sup>3)</sup>	574554 R
	F 32 45° (PR-2B) <sup>3)</sup>	574556 R
	H 16*	570320
	H 20*	570350
	H 26*	570370
	H 32	570380
	TH 16*	570460
	TH 20*	570470
	TH 26*	570475
TH 32	570480	
U 16*	570765	
U 20*	570775	
(DN 26)	U 25*	570780
	U 32	570785
	VP 16*	570910
	VP 20*	570915
	VP 32	570925
<b>Z</b>		
Zetaesse	TH 14*	570455
Multistrato	TH 16*	570460
EUROPEX	TH 18*	570465
	TH 20*	570470
	TH 26*	570475
	TH 32	570480
	U 14*	570760
	U 16*	570765
	U 18*	570770
	U 20*	570775

System	Pressing contour	Art.-No.
Zetaesse	TH 14*	570455
Multistrato	TH 16*	570460
	TH 18*	570465
	TH 20*	570470
	TH 26*	570475
	TH 32	570480
ISOPEX	U 14*	570760
	U 16*	570765
	U 18*	570770
	U 20*	570775
	TH 12*	570452
ZEWOTHERM Zewo Press Premium	TH 16*	570460
	TH 17*	570462
	TH 18*	570465
	TH 20*	570470
	TH 26*	570475
	TH 32	570480
	TH 40	570485
TH 50 (S)	572400	
TH 63 (S)	572405	
ZEWOTHERM Zewo Press PPSU	TH 16*	570460
	TH 20*	570470
	TH 26*	570475
	TH 32	570480
ZURN	US ¾**	571450
INDUSTRIES	US ½**	571455
	US ¾**	571460
ZURN PEX	US 1**	571465
	US 1¼"	571470
	US 1½"	571475
	US 2"	571477

## Accessories

Description	Art.-No.
<b>Adapter tongs Z1</b> for driving REMS pressing rings 45° (PR-2B)	574500RX
<b>Adapter tongs Z2</b> for driving REMS pressing rings M 35–54 (PR-3S), RN 40–50 (PR-3S)	572795RX
<b>Adapter tongs Z4</b> for driving REMS pressing rings F 75 (PR-3B), TH 63–75 (PR-3B), U 63–75 (PR-3B), RN 63 (PR-3B)	572801RX
<b>Adapter tongs Z5</b> for driving REMS pressing rings VFz/VR 64–108 (PR-3B), VMPz 1½–2" (PR-3B), VUSFz 2½–4" (PR-3B), VAUFz 65–100 (PR-3B)	572802RX
<b>Adapter tongs Z6 XL</b> for driving REMS pressing rings XL 64,0–108,0 (PR-3S) with REMS Power-Press XL	579120R
<b>Steel case with insert for 6 pressing tongs</b> (up to Ø 35 mm/1" and pressing tongs U 40, U 50, TH 40, F 40, F 50, G 40, VUS 1¼")/cropping tongs and compartment for pipe cutter up to 42 mm	570295R
<b>Steel case with insert for 2 pressing tongs</b> (M 42 (4G), M 54 (4G), V 42, V 54, H 40, H 40 A, VUS 1½", VUS 2")	570290R
<b>Steel case with insert for adapter tongs with</b> pressing rings M 42 (PR-3S) and M 54 (PR-3S) or with pressing rings SA 42 (PR-3S) and M 54 (PR-3S).	572810R
<b>Steel case with inlay for adapter tongs and</b> 4 pressing rings VFz 64,0–108,0/VR 76,1–108,0/ VUSFz 2½–4" (PR-3B)	572809R
<b>Steel case with insert for adapter tongs Mini Z1</b> and adapter tongs Z1 and 6 REMS pressing rings V 12–35 45° (PR-2B) or M 12–35 45° (PR-2B)	574516R

